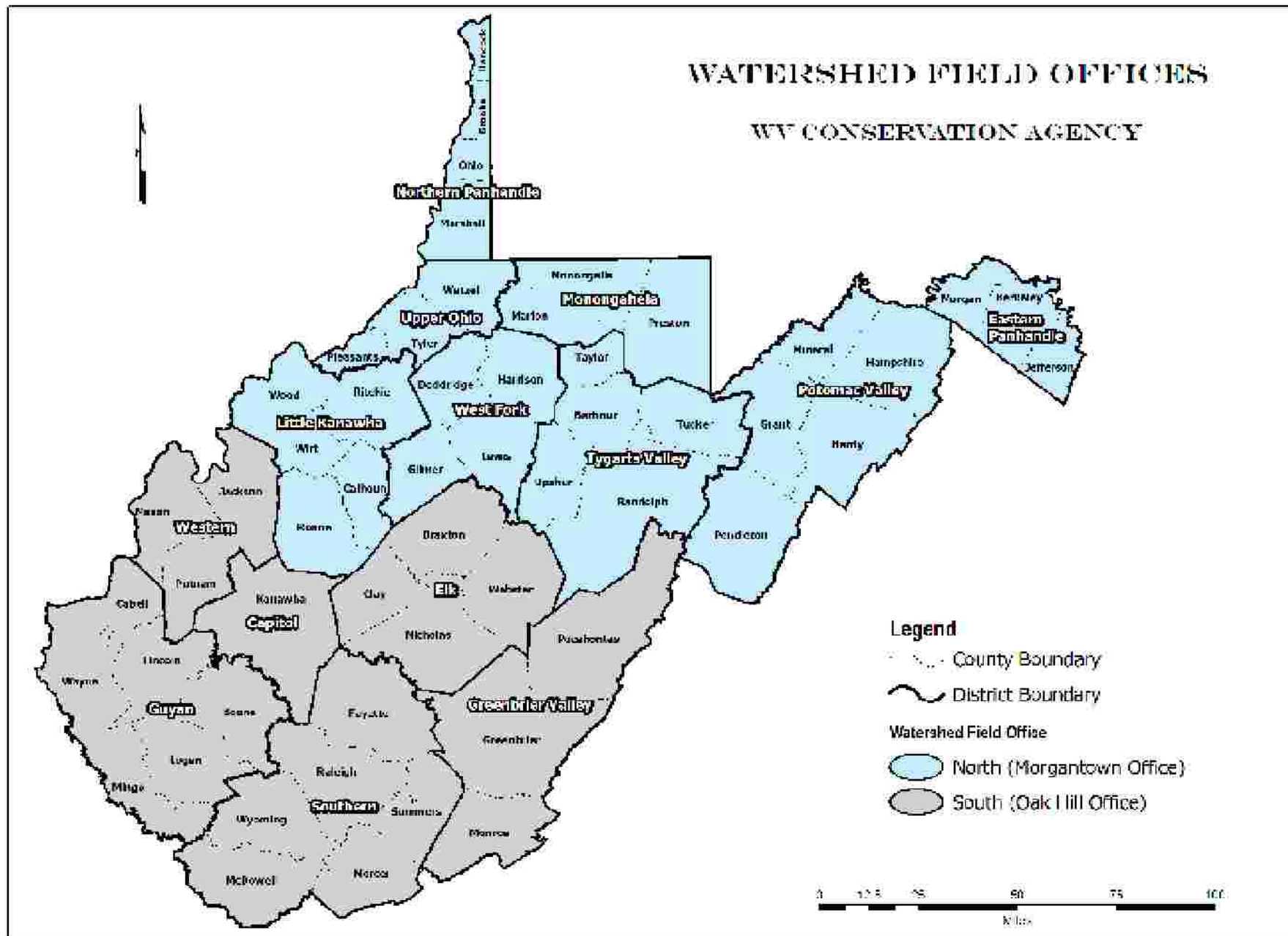


West Virginia Conservation Agency



WATERSHED FIELD OFFICES

WV CONSERVATION AGENCY



WVCA

Ø Watershed Division/Stream Section

- | Programs
- | Staff



Issues

- Ø Stream Blockages
- Ø Floodplain Encroachment
- Ø Sedimentation
- Ø Impacts of resource extraction activities
- Ø Impacts of development





Site Identification

Ø Areas of public concern

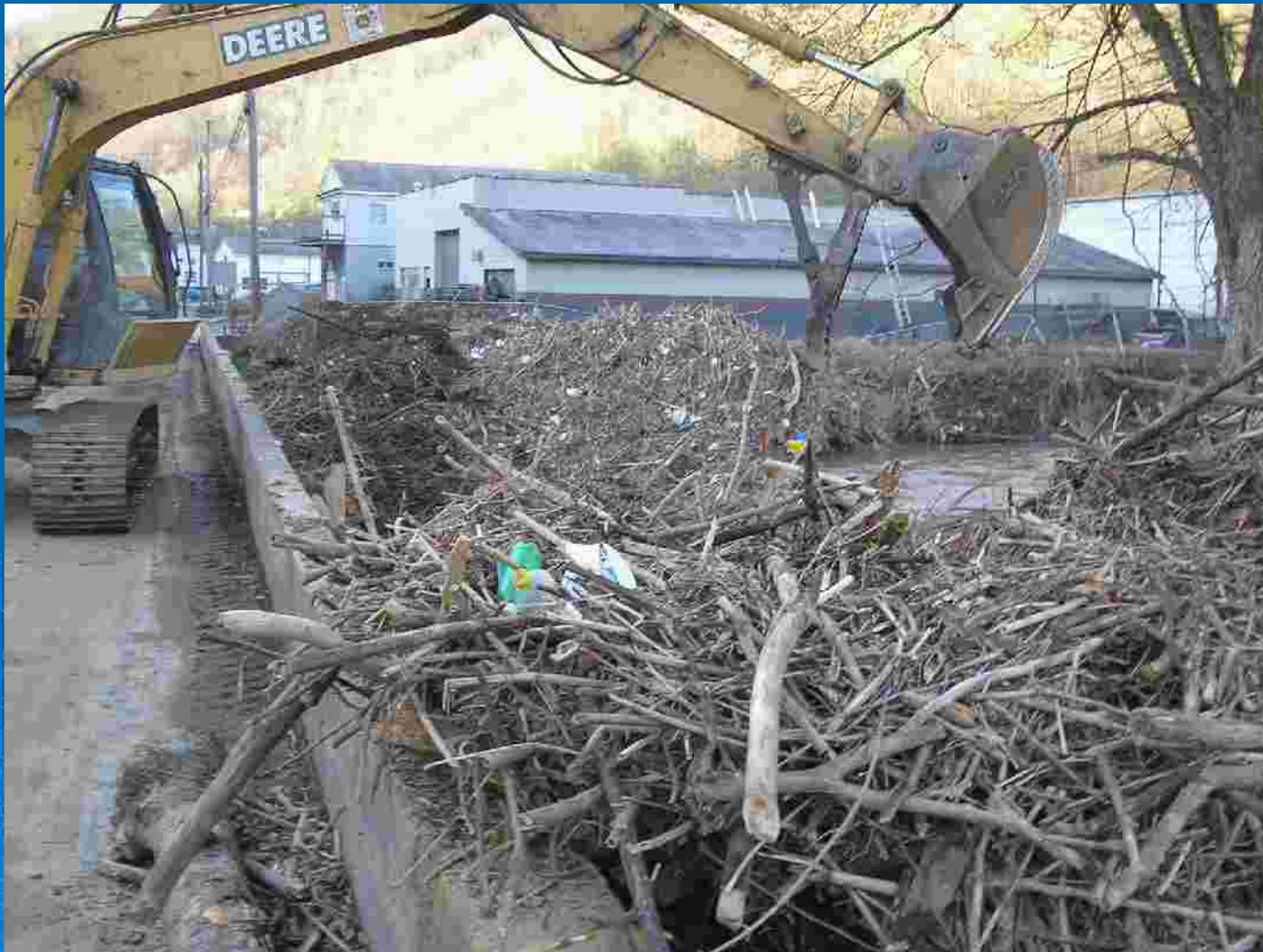
- | Citizen Contact Reports
- | Stream Access Permits
- | Government

Ø Types

- | Erosion
- | Sedimentation
- | Flood reduction
- | Agriculture



Blockage Removal



Blockage Removal



Stream Restoration



Floodplain Restoration



Partners

- Ø Landowners
- Ø Industry
- Ø Local Partners
 - | City Government
 - | Boards of Education
 - | County Commissions
 - | Watershed Associations
- Ø State Partners
 - | DEP
 - | DNR
 - | SHPO
- Ø Federal Partners
 - | NRCS
 - | FWS
 - | ACE
 - | FEMA

Industry

Ø Mitigation

- | Components
- | Environmental Impacts
 - Credits
- | Permitting
- | Monitoring



Garrett's Fork

- Ø Industry/Agency Partnership
- Ø Flooding Impacts Reduced
- Ø Bank Stabilization
- Ø Habitat Improvement



Garrett's Fork



Garrett's Fork



Proactive Approach

C

C

A

P

Conservation

Credit

Assurance

Program



Goals

- Ø Bank stabilization
- Ø Improved sediment transport
- Ø Improved water quality
- Ø Enhanced floodplain area
- Ø Increased fish habitat
- Ø Blockage removal
- Ø Riparian area enhancement

CCAP Components

Ø Stream Restoration

Ø Agriculture

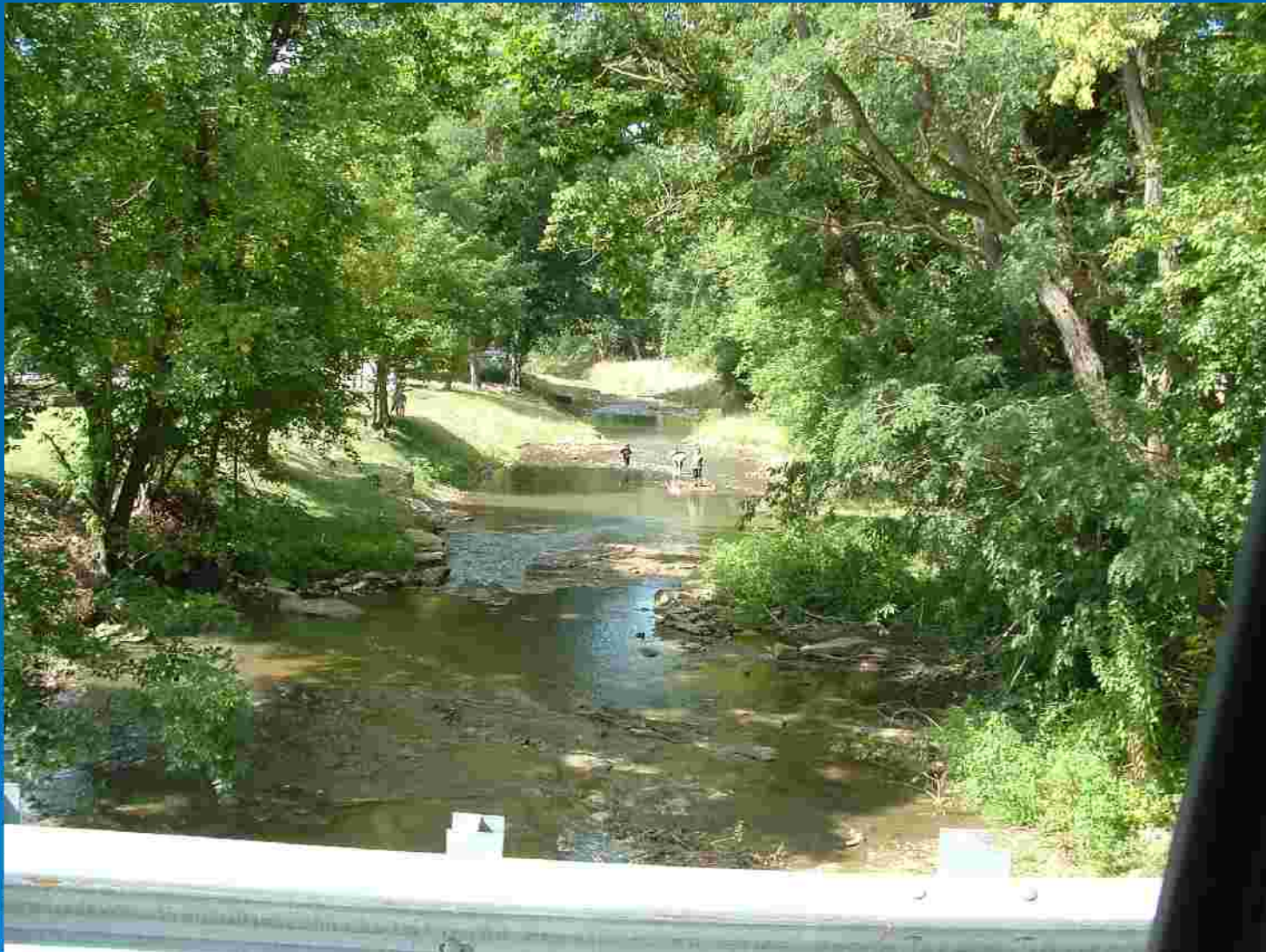


Stream Restoration

- Ø Bank stabilization
- Ø Sediment transport
- Ø Floodplain Enhancement
- Ø Channel capacity enhancement
- Ø Riparian Area Enhancement



Stream Restoration



Agriculture

- Ø Fencing
- Ø Alternative Water Sources
- Ø Stabilized Stream Crossings
- Ø Ponds
- Ø Lime & Fertilizer
- Ø Pasture Management
- Ø Riparian Area Enhancement

Agriculture



Questions?

