

# Internal Partnership To Protect Infrastructure And Improve Water Quality

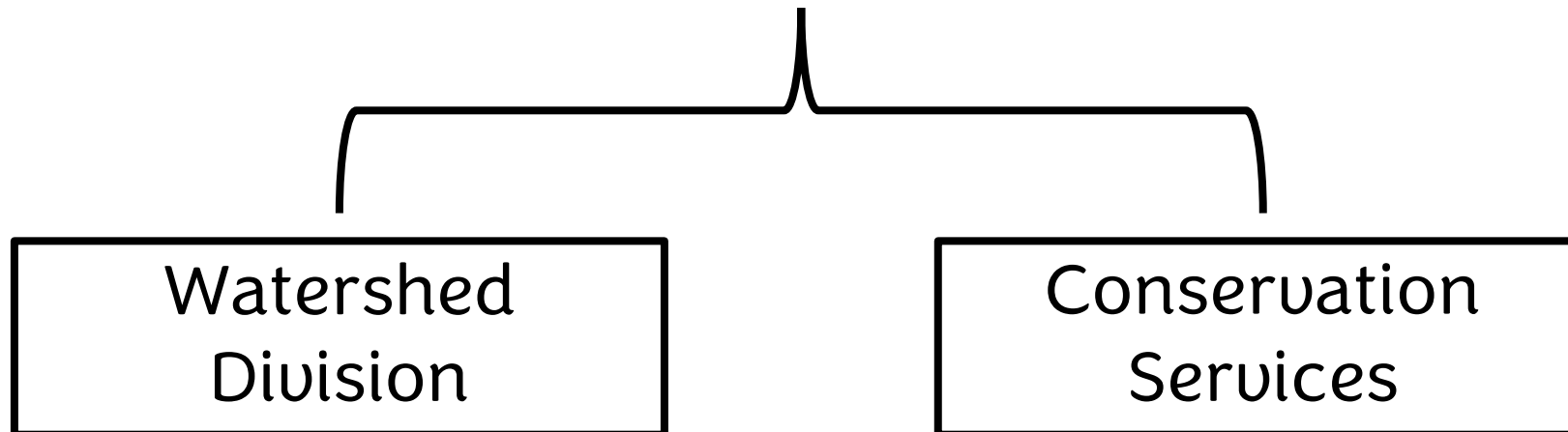


*West Virginia*  
Conservation Agency

NASCA Field Staff Sharing Session  
October 2022

**WV Conservation Agency has two divisions which have field staff that work to implement mission specific practices.**

“To provide for and promote the protection and conservation of our soil, land, water and related resources for the health, safety, and general welfare of the state’s citizens.”



**Conservation Services receives funding annually to support various voluntary programs in West Virginia.**

Approximately \$2 Million Annually

- State Funds
- §319 Non-Point Source Grant
- Chesapeake Bay Implementation Grant
- Various project specific grants



## Chesapeake Bay Program Office awarded Most Effective Basin Funding to states beginning in 2020.

Allocations to states were determined considering the following two factors:

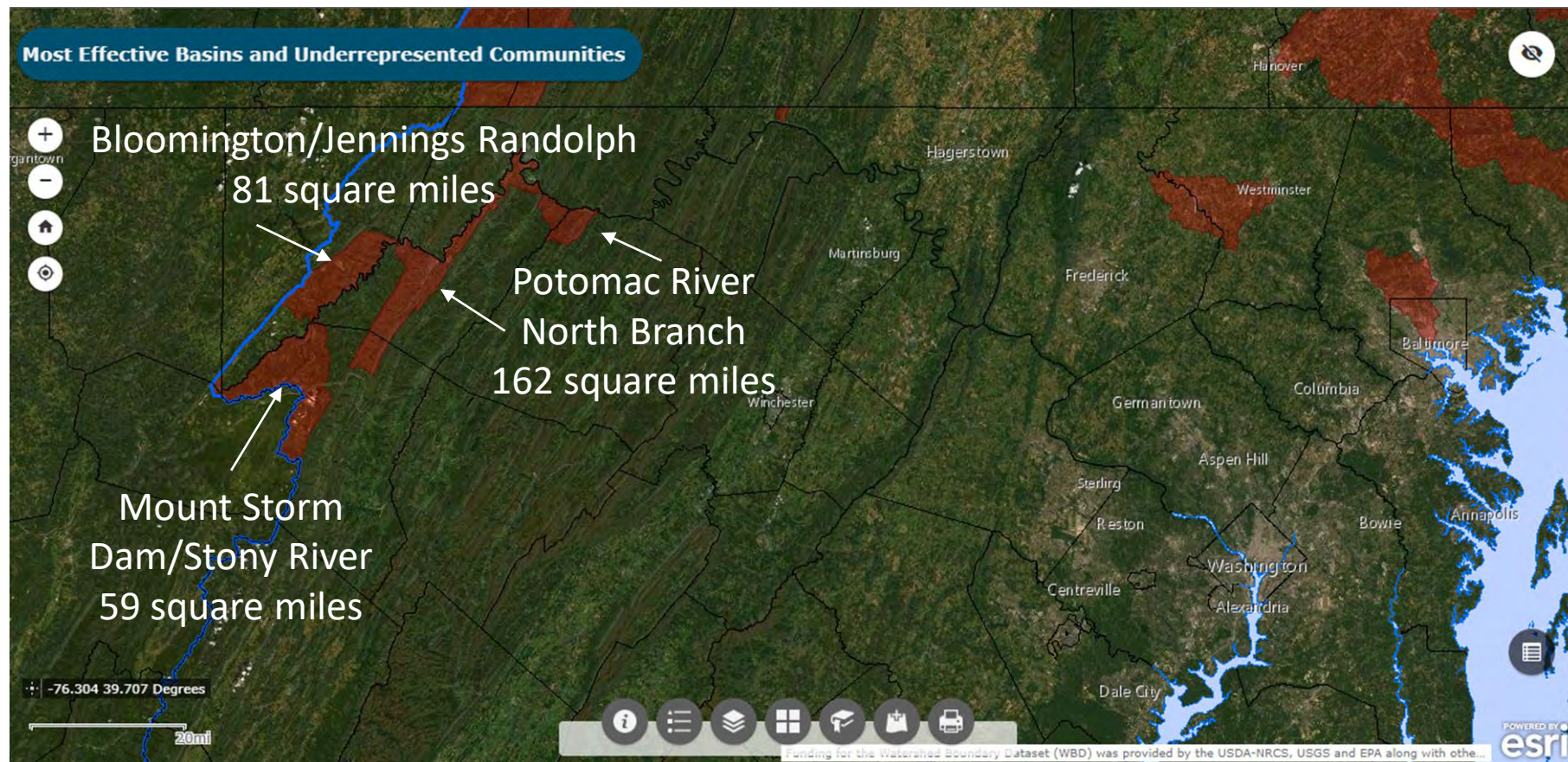
- Cost effectiveness
- Load effectiveness





# What does this mean for West Virginia?

\$54,681 awarded annually to implement voluntary priority Ag BMPs within an identified 302 square mile area!





# How will the funding be utilized?

Offer voluntary incentive payment programs

- Litter Transfer
- Divisional Fencing
- Water Exclusion Fencing
- Installation of Alternative Watering Facilities
- Installation of Forest Riparian Buffers



## The program was met with challenges...

- Lack of history
- Limited cooperators

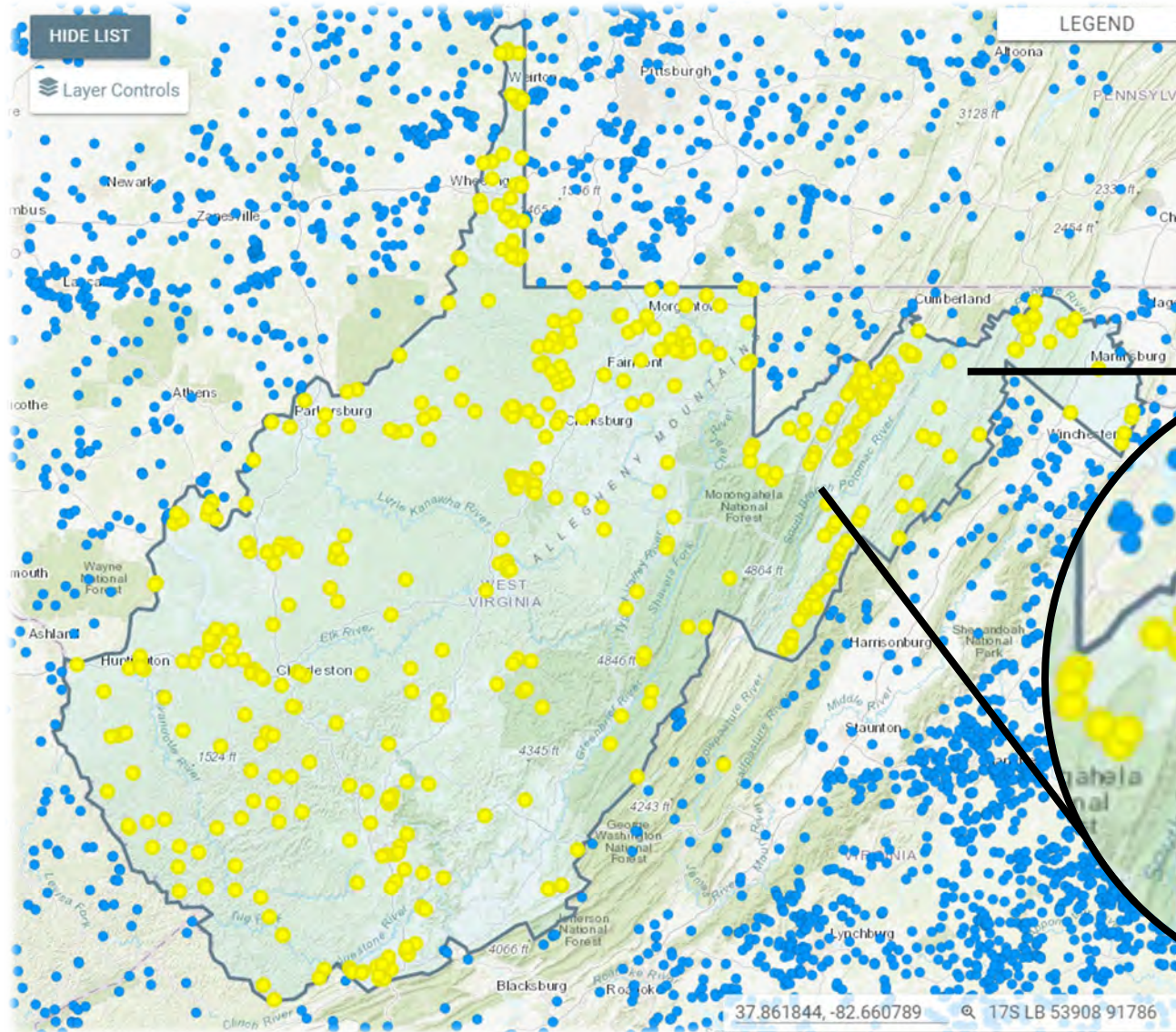
## Solutions included...

- Providing outreach via mailers
- Cold calling
- Implementing highly visible projects in a public park
- Implementing practices on property that will protect local infrastructure





# West Virginia has 170 flood control dams



- 9 dams are within MEB area
- 28 additional dams directly impact MEB area
- 6 have livestock present



## New Creek 7

- Constructed in 1958 to reduce the flood risk
- 3-acre earthen reservoir
- Located on a 300+ acre family beef farm
- Within identified MEB
- Cattle actively grazing dam and spillway

















# Project Overview - New Creek 7



## BMPs Proposed

- 1,665 feet of exclusion fence
- 1,680 square feet of controlled access point



- NRCS standards and specifications will be followed.
- Access points will be engineered.
- Projects will be monitored and maintained for the expected lifespan by the Watershed Division.



## What is it going to cost to implement?

### PROJECT COST

Exclusion Fence = \$8,000

Controlled Water Access Point = \$3,300

TOTAL = \$11,300

Grass buffers on pasture provide the following efficiencies to the Chesapeake Bay:

- 24% Nitrogen
- 30% Phosphorous
- 40% Sediment

# Future Plans

- Continue to provide MEB outreach
- Continue to investigate potential projects
- Develop farm specific plans
  - Exclude livestock
  - Provide alternative water source or controlled access points
  - Develop Prescribed Grazing Plans



# Thank You



*West Virginia*  
Conservation Agency

Cindy Shreve  
[cshreve@wuca.us](mailto:cshreve@wuca.us)

Ben Heauner  
[bheauner@wuca.us](mailto:bheauner@wuca.us)