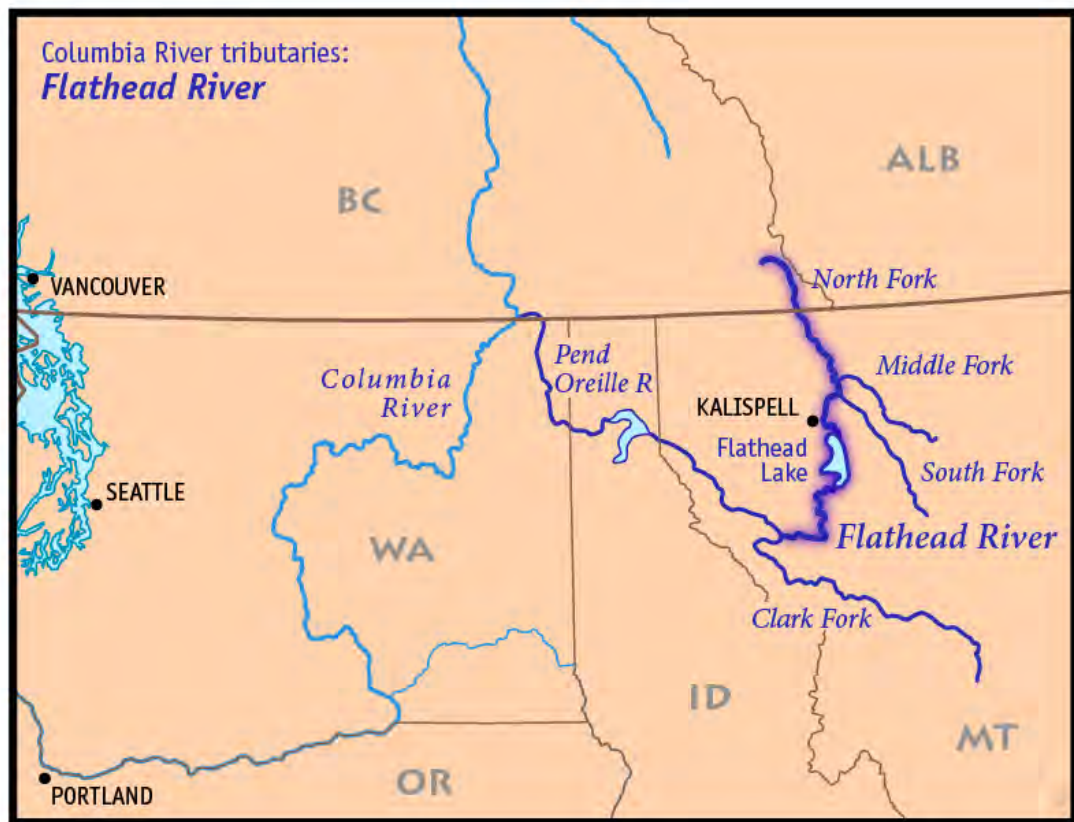


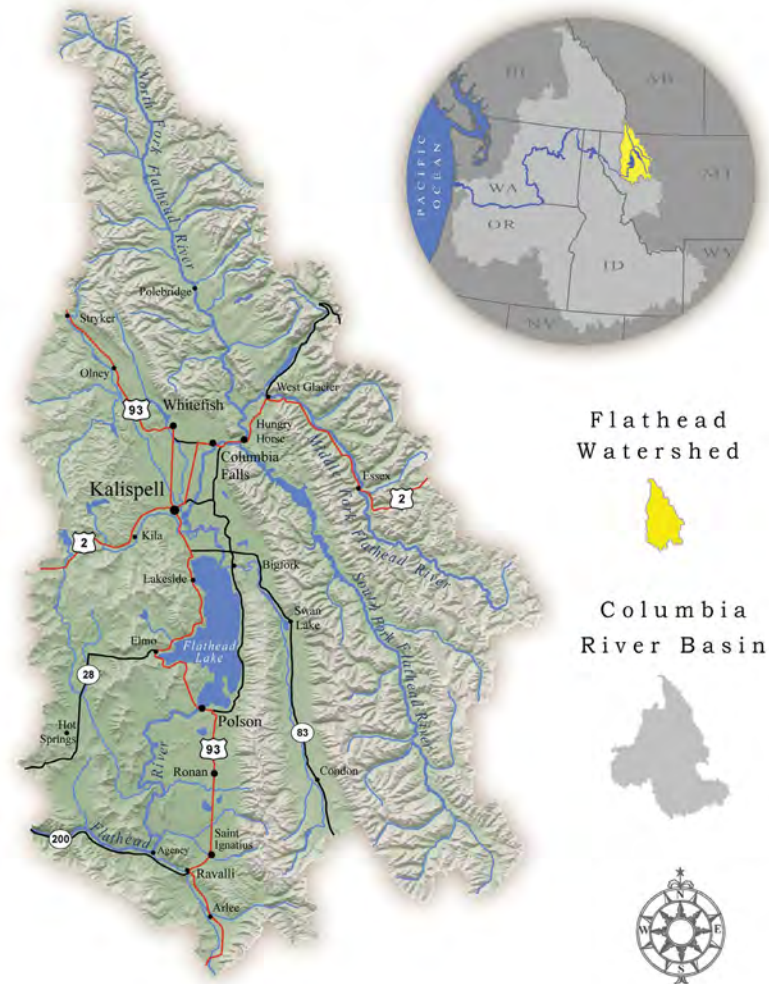


# A Resolution for Change?

The Story of SJ28: A Resolution for the Study  
of Erosion on the Flathead River



## Flathead Watershed







































**MONTANA**  
**ASSOCIATION *of***  
**CONSERVATION**  
**DISTRICTS**





A JOINT RESOLUTION OF THE SENATE AND THE HOUSE OF REPRESENTATIVES OF THE STATE OF MONTANA REQUESTING AN INTERIM STUDY OF EROSION ALONG THE FLATHEAD RIVER.



A JOINT RESOLUTION OF THE SENATE AND THE HOUSE OF REPRESENTATIVES OF THE STATE OF MONTANA REQUESTING AN INTERIM STUDY OF EROSION ALONG THE FLATHEAD RIVER.

WHEREAS, the Flathead River originates in the MacDonald Range in southeastern British Columbia before flowing south to Montana and emptying first into Flathead Lake and eventually into the Clark Fork River; and

WHEREAS, the three forks of the Flathead River and other tributaries comprise the Flathead River basin watershed, which drains 8,587 square miles; and

WHEREAS, the Flathead River is important for the natural and economic life of the Flathead Valley; and

WHEREAS, economists estimate significant fiscal impacts associated with the Flathead River and Flathead Lake, including shoreline property values of \$6 billion to \$8 billion, nature-based tourism that comprises roughly 20% of the \$7.8 billion local economy, and ecological services, such as water supply and purification and flood and drought mitigation, that contribute more than \$20 billion in benefits to human society; and

WHEREAS, the lower Flathead River in Flathead County is bordered by private lands of agricultural, ecological, and economic importance; and

WHEREAS, the Flathead Lake Biological Station lists erosion as negatively impacting water quality on Flathead Lake; and

WHEREAS, the total maximum daily load report for Flathead Lake identifies suspended sediments, caused by streambank erosion, to be a major contributor to phosphorus and nitrogen loading of Flathead Lake; and

WHEREAS, the Flathead-Stillwater watershed restoration plan identifies streambank erosion as a

















**Collaboration**



JEFF WELBORN

RHONDA KNUDSEN  
MARTY MALONE  
BOB PHALEN

FINAL agenda

## Water Policy Interim Committee

Sept. 20-21, 2022

Room 137

Agenda times are approximate

### Tuesday, Sept. 20

1 p.m. Call to order

- Roll call
- Meeting overview—Mr. Mohr

1:05 p.m. Agency rulemaking update

- Mr. Carroll
- Public comment
- Committee discussion and action, if any



Water Policy  
Interim  
Committee

2021-  
2022

FINAL Work Plan







## A CONSTANT REWORKING

### LIST OF SOLUTIONS

Policy solutions to help mitigate erosion along the lower Flathead River are somewhat limited. Policy will not be able to control exception flood or storm events or alter the meanderings of an alluvial river on a "flat land."

The first solution may reside with landowners who decide or are forced to take matters into their own hands and install armored or bioengineered methods of erosion control.

Policy options include the following:

- Expand education and outreach efforts on causes and effects of erosion.
- Develop a landowner incentive program for installation of certain bank stabilization methods.
- Establish a no-wake zone for certain types of boating. This could be imposed by either the Montana Legislature or the Montana Fish and Wildlife Commission.
- Designate the lower Flathead River as lakeshore, effectively creating a no-wake zone for all sections of river less than 200 feet from shore.
- Create land use regulations through the Flathead County Commission or the Flathead Conservation District to reduce accelerated runoff into the affected watershed.
- Appeal to federal authorities to revise Qlipse' Dam operational requirements, perhaps reducing the summertime lake pool elevation.



WATER POLICY INTERIM COMMITTEE MEMBERS AT LAKE HELENA.  
(STAFF PHOTO)

As of June 23, 2022, the committee had not made a recommendation related to SJ 28.



# Thank you!



**MONTANA  
ASSOCIATION of  
CONSERVATION  
DISTRICTS**



**FLATHEAD  
LAKERS**  
DEFENDERS OF THE WATERSHED



**FLATHEAD LAKE  
BIO STATION**  
UNIVERSITY OF MONTANA



**FLATHEAD**  
CONSERVATION DISTRICT  
Locally-led Conservation Since 1945



**US Army Corps  
of Engineers®**

