

Washington State



**Conservation
Commission**

Farmland Preservation

2021 NASCA

Kate Delavan, Office of Farmland Preservation
Josh Giuntoli, SW Regional Manager



Agricultural Conservation Easements



Natural Resource and Farm protection



Working in the Community

An aerial photograph showing a river winding through a verdant landscape. The river is bordered by dense green trees and shrubs on the left, while the right bank features a large, open green field with some fencing and a small structure. In the background, more trees and distant hills are visible under a clear sky.

Protecting the Investments

Farmland Roundtable

Led by Office of Farmland Preservation in coordination with county staff

Space for farmland protection practitioners and stakeholders to network, share resources, and learn from one another.

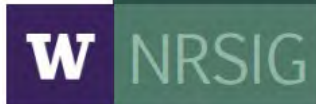
Includes county, state, federal, congressional, lenders, land trusts, CDs and others.

THE 2019 WASHINGTON STATE AGLAND DATABASE



Luke Rogers
Jeffrey Cornick
Andrew Cooke

Natural Resources Spatial Informatics Group
Precision Forestry Cooperative
School of Environmental and Forest Sciences
University of Washington

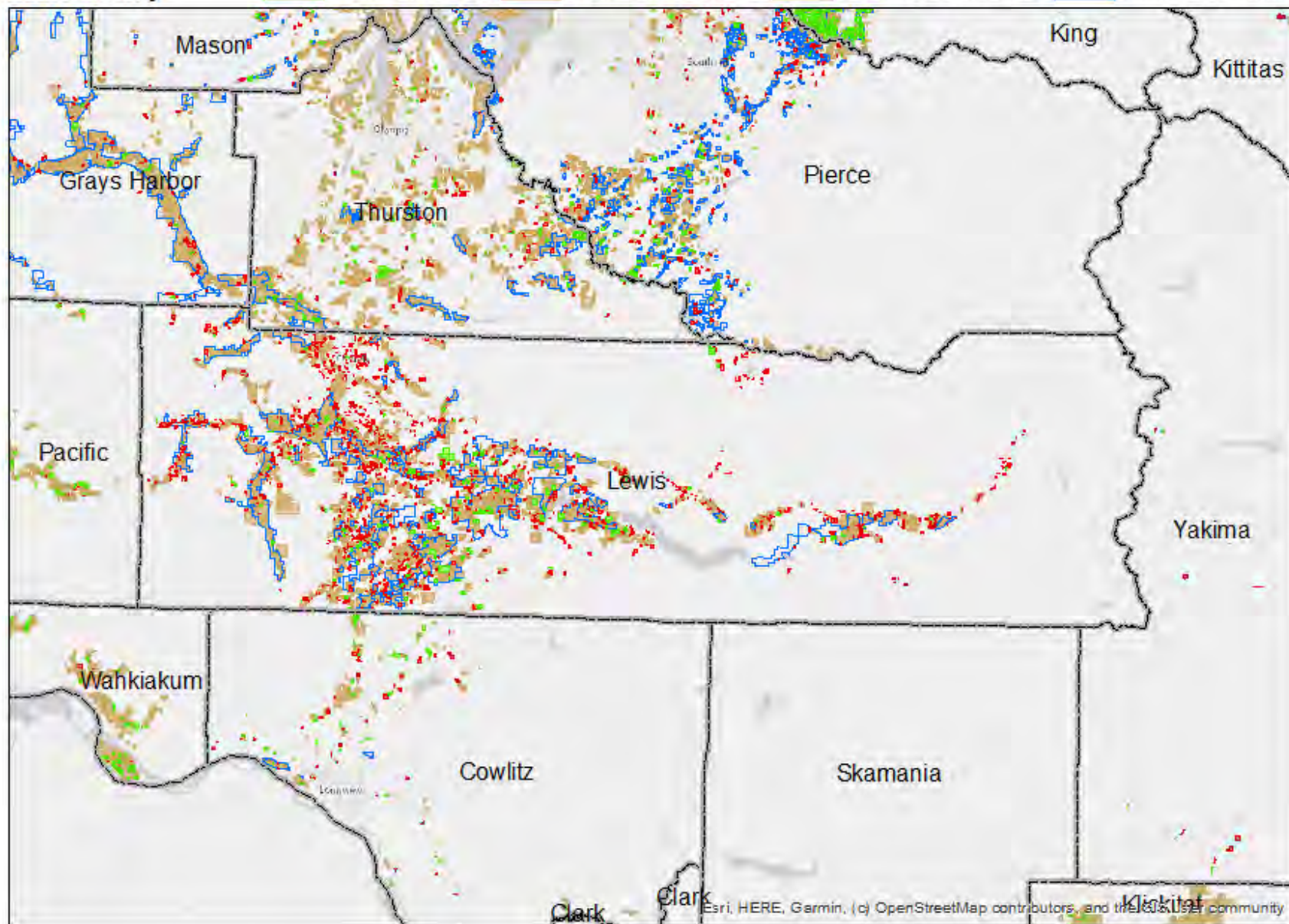


March 24, 2021

Washington State Agricultural Land Database

Lewis County

Converted to Ag Converted From Ag Ag in 2007 and 2019 Zoned Agriculture



FarmPAI – New Opportunity

**Farmland Protection and Affordability
Investment (FarmPAI)**

**Collaboration between OFP, land trusts, and
the Washington State Housing Finance
Commission**

**New source of financing for the acquisition of
land for affordable farmland access and long-
term conservation.**



COWICHE RANCHES

**FOR
SALE**

40 ACRES w/ Lake
CALL FOR AGENT
504-656-8
All Private Property Past this S

Locally Led Conservation



Questions?

Contact:

Kate Delavan

kdelavan@scc.wa.gov

Josh Giuntoli

jgiuntoli@scc.wa.gov



Washington State
Conservation Commission