



United States Department of Agriculture

National Association of State Conservation Agencies

Annual Meeting

NRCS Chief Jason Weller

September 2014



United States Department of Agriculture









United States Department of Agriculture





United States Department of Agriculture





United States Department of Agriculture







JOSEPH TOMELLERI









U.S. Fish & Wildlife Service

News & Releases

Mountain-Prairie Region

[HOME](#) [SCIENCE](#) [WILDLIFE REFUGES](#) [ECOLOGICAL SERVICES](#) [MIGRATORY BIRDS](#) [FISHERIES](#)

[External Affairs](#) >> [News & Press Releases](#) >>

News Release

Arctic Grayling Does Not Warrant Protection Under Endangered Species Act Due to Collaborative Partnerships

For Immediate Release

August 19, 2014

[Like](#) [+1](#) [Tweet](#) [45](#) [+1](#) [11](#)

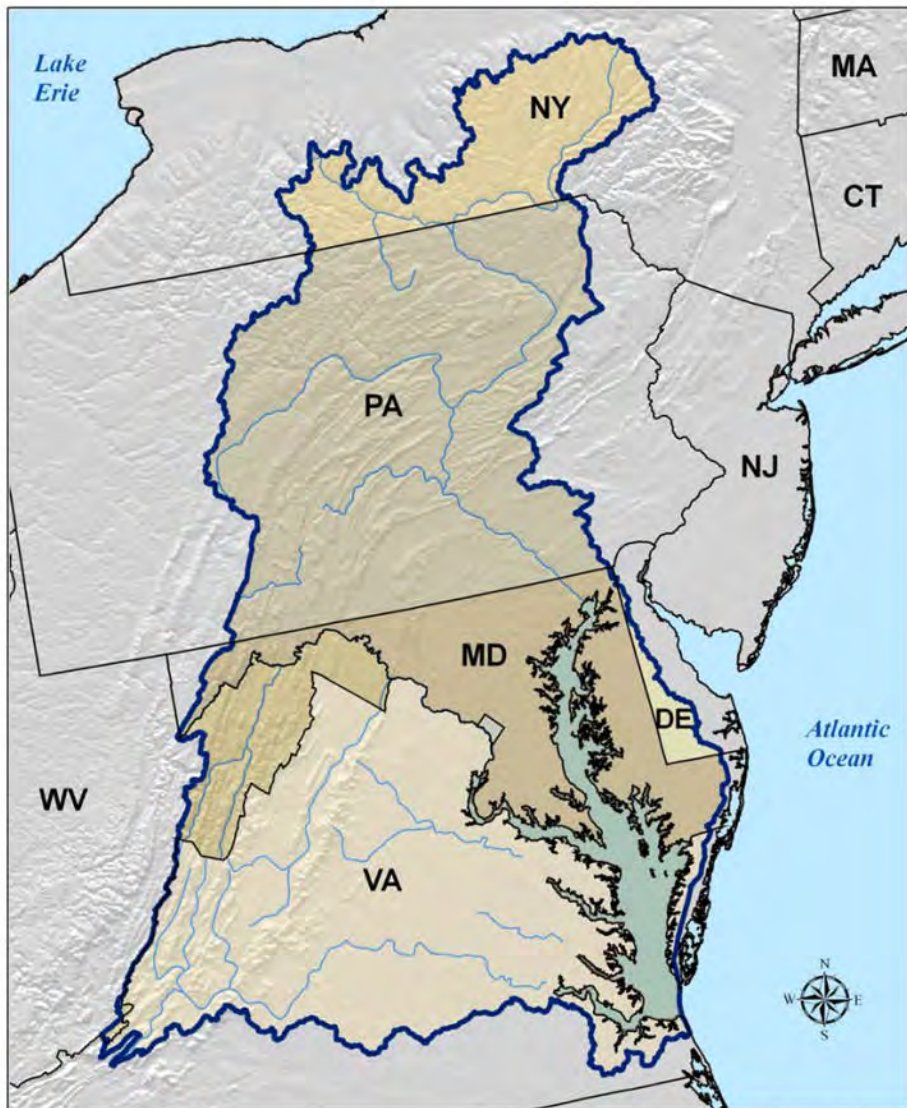
MONTANA – The U.S. Fish and Wildlife Service announced today its finding that the Upper Missouri River Distinct Population Segment (DPS) of the Arctic grayling does not warrant protection under the Endangered Species Act (ESA). The Service reached this conclusion after analyzing the significant conservation efforts carried out by private landowners as well as federal and state agency partners to improve conditions for Arctic grayling in the Upper Missouri River basin. These efforts have helped bring the species to the point that it is not in danger of extinction now or in the foreseeable future, i.e., does not meet the definition of an endangered or threatened species under the ESA.



Arctic Grayling. Credit: USFWS.

Private landowners in the Big Hole and Centennial valleys worked through a voluntary Candidate Conservation Agreement with Assurances (CCAA) to achieve significant conservation of grayling within its range. Since 2006, over 250 conservation projects have been implemented under the CCAA to conserve Arctic grayling and its habitat, including: riparian fencing, irrigation flow reductions, improved irrigation infrastructure, fish ladders, improved stock water systems, and both passive and active stream restoration. Habitat





Conservation in CHESAPEAKE BAY

Natural Resources Conservation Service

WATERSHED STATES

Chesapeake Bay Watershed touches

6 STATES,
 **83,800+**
farms & ranches,
and
17 MILLION 



EROSION CONTROL

Since 2006, average edge-of-field
sediment losses decreased by

15.1 MILLION  **per year**
which is enough soil to fill
150,000



TRAIN CARS

stretching **1,704 MILES,**
further than from Washington, D.C.
to Albuquerque, N.M. per year.



CONSERVATION ON THE GROUND



Acres with some form of
erosion control practice.



Loss of Nitrogen into nearby waterways
reduced by **48.6 million pounds/year**



Loss of Phosphorus into
nearby waterways
reduced by **7.1 million pounds**

Sediment entering the bay was reduced by **8 percent.**
Nitrogen was reduced by **6 percent.**
Phosphorus was reduced by **5 percent.**



CLEANER 

All estimates from the Conservation Effects Assessment Project (CEAP)
USDA's landscape conservation assessment program



Before

After









United States Department of Agriculture



 
United States Department of Agriculture
Natural Resources Conservation Service

unlock your farm's potential

www.nrcs.usda.gov

Soil Health Management Systems can:

- **reduce** input costs,
- **protect** against drought and
- **increase** production.

Learn how to **unlock the secrets in YOUR soil** today!

USDA is an equal opportunity provider and employer.

 **unlock the SECRETS IN THE SOIL**



United States Department of Agriculture





United States Department of Agriculture

PROFILES IN soil health

Jim Ward

Sharon, Massachusetts

150 acres

Crops: sweet corn, pumpkins,
vegetables, and small fruit

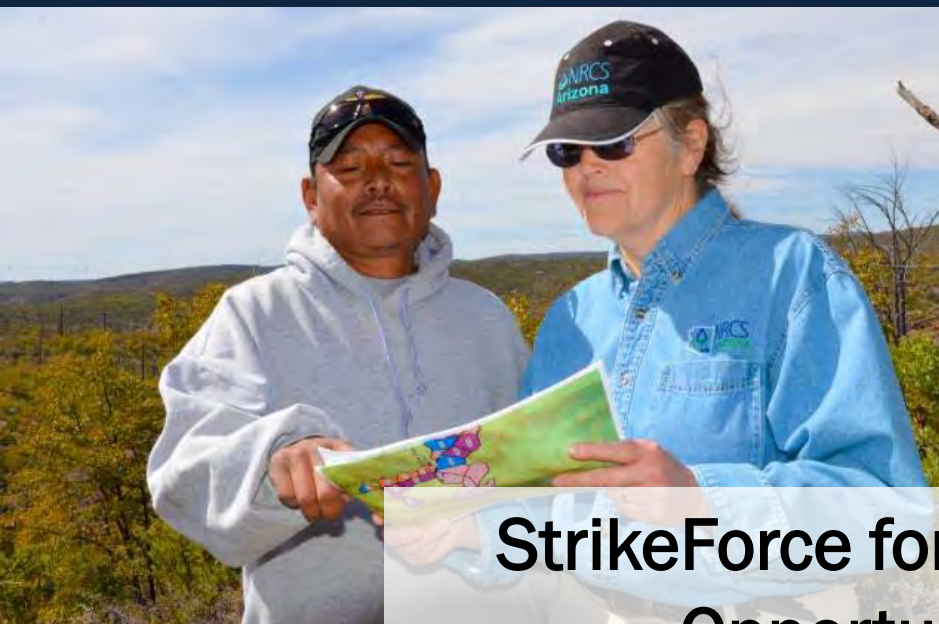
Covers: sudex, buckwheat, and winter rye



unlock the
SECRETS
IN THE
SOIL



United States Department of Agriculture



StrikeForce for Rural Growth and Opportunity Initiative





United States Department of Agriculture





United States Department of Agriculture





United States Department of Agriculture

EQIP

The graphic part of the EQIP logo, featuring a stylized orange cloud shape above a series of horizontal orange lines that curve upwards at the ends, resembling a field or a stylized 'P'.



United States Department of Agriculture

CSP 

The text "CSP" is in a bold, yellow, sans-serif font. To its right is a yellow icon consisting of a jagged sunburst shape with a solid yellow circle in the center, which contains a stylized house silhouette.



United States Department of Agriculture



ACEP





United States Department of Agriculture



**Coming Together for Conservation:
New Approach, More Partners**

USDA News Release: Conservation Service

1 Regional Conservation Partnership Program
is a new program that mobilizes partnerships to multiply investments and reach common conservation goals.

2 More Partners bring innovation, new ideas, resources and local expertise to solve problems.

Water Users + Nonprofits + State and Local Governments + Private Industry + Water Districts + Universities

Priority Conservation Projects

3 RCPP Funding Options

40% National (multi-state projects) 25% State (state projects) 35% Critical Conservation Areas (areas designated by Secretary)

4 USDA plans to invest up to \$1.2 billion

USDA Goal:
Partners
match
investment
to equal —

\$2.4 billion
for conservation through 2018

more: nrcs.usda.gov/FarmBill



United States Department of Agriculture

