

## Demographic Survey Results



A voluntary report submitted by the MN  
Board of Water and Soil Resources  
February 2008

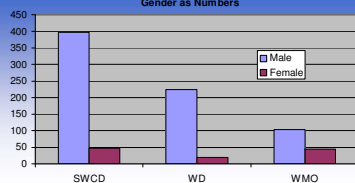
## Background

- The Board of Water and Soil Resources was asked to obtain demographic information on SWCD, WD and WMO board members
- Survey sent out in September 2007
- Received responses from:
  - 444 SWCD, 243 WD and 135 WMO board members
  - 93% response rate with 148 of 154 possible

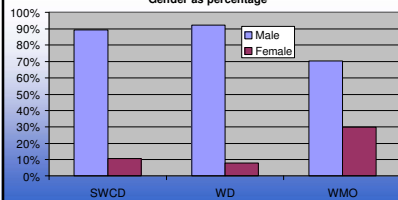
### Gender Demographics

- Metro WMO's have 30% representation of women
- SWCD's and WD's have 10% or less

Gender as Numbers



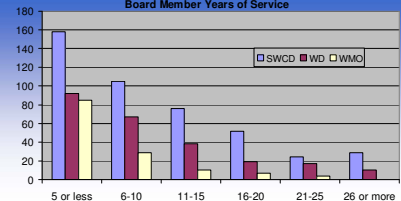
Gender as percentage



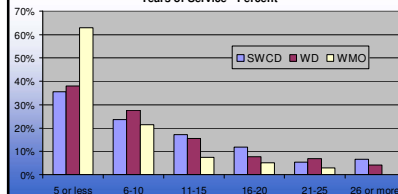
### Years of Service

- Majority under 10 years of service
- 1/3 have five years or less
- 10% with greater than 20 years of experience

Board Member Years of Service



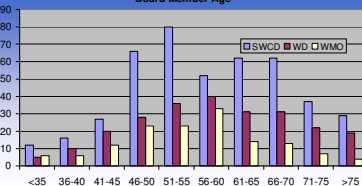
Years of Service - Percent



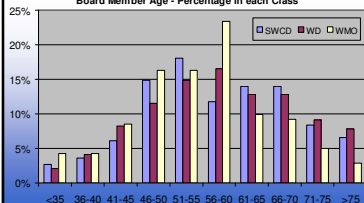
### Board Member Age

- 35% in 50's
- Skewed towards older brackets
- Not many younger folks

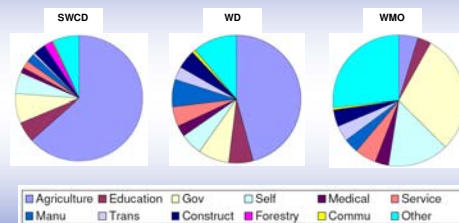
Board Member Age



Board Member Age - Percentage in each Class



## Occupation of Board Members



## Number of Contested Elections for Various County Wide Offices

	Commissioner		Sheriff		Auditor/Treas		Surveyor		Attorney		Recorder		SWCD		Coroner	
	Seats	Contd	Seats	Contd	Seats	Contd	Seats	Contd	Seats	Contd	Seats	Contd	Seats	Contd	Seats	Contd
Totals	205	135	80	36	102	20	9	1	80	15	66	10	177	18	10	0
Percent	66%		45%		20%		20%		19%		16%		11%		0	

## Summary

- Survey revealed useful information and could be conducted every five years to determine trends.
- Representation of female board members is greatest in the metro area with 30% of all board members.
- 45% of all board members have 5 years or less of experience and 69% have 10 years or less experience on the board.
- As nearly half of all board members have less than 5 years of experience, board training may be a significant need.
- Occupations seem to reflect the communities they serve with more agricultural representation on SWCD and WD boards and a wider variety of occupations in the metro area.
- Since the "Other" category represented 27% of respondents in the metro area, this category may need to be expanded, using census or legislative categories may be an option.

## Demographic Survey Results



A voluntary report submitted by the MN  
Board of Water and Soil Resources  
February 2008