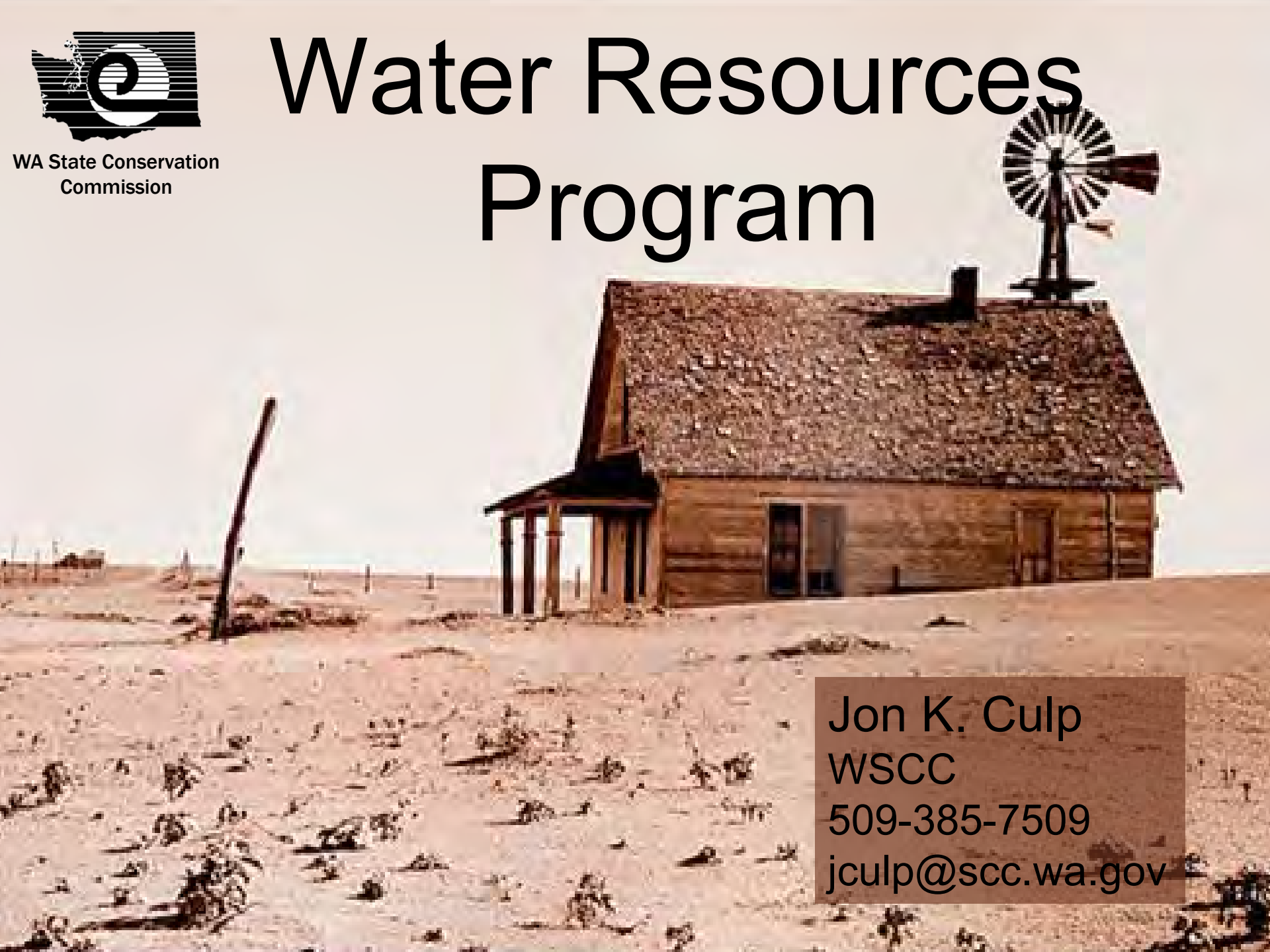




WA State Conservation
Commission

Water Resources Program



Jon K. Culp
WSCC
509-385-7509
jculp@scc.wa.gov



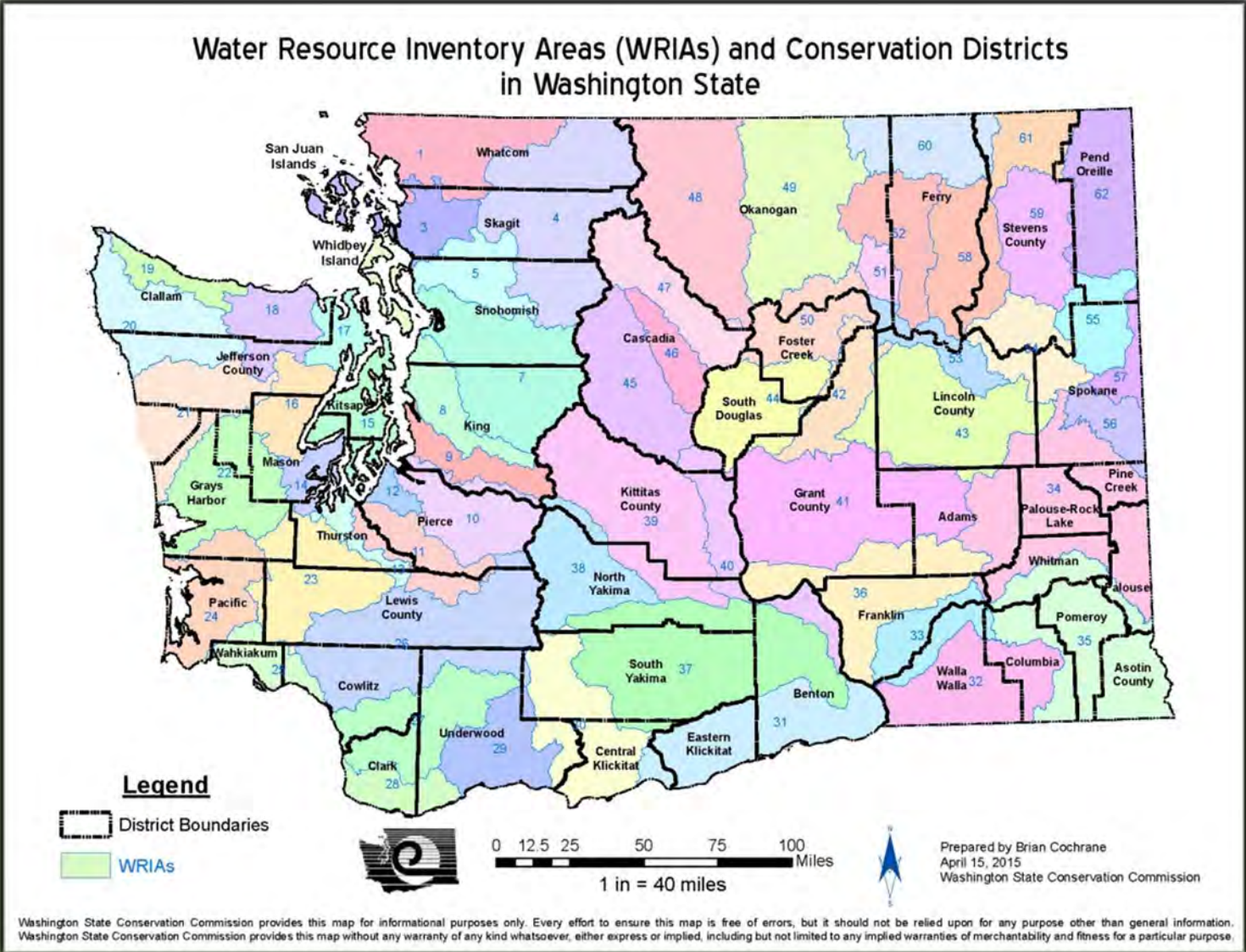
WA State Conservation
Commission

- 300+ different crops grown
- \$10.6 billion in Market Value
- 35,500 Farms (95% family owned)
- 160,000 employed in ag and food
- 1.8 Million Irrigated Acres
- 75% from surface water sources
- 80% of all water withdrawals for ag
- In Prosser, an average of 7 inches of precipitation fall per year while apple orchards need about 42 inches of water.



WA State Conservation
Commission

CDs and WRIAs





WA State Conservation
Commission

Water is for Fighting. . .

Mantra of the West





WA State Conservation
Commission

A man wearing a green jacket and sunglasses stands in a river, holding a large, flexible, corrugated metal pipe. The pipe is partially submerged in the water. The background shows a river with some vegetation on the banks.

Tools for Problem Solving



WA State Conservation
Commission

Irrigation Efficiencies Program

- ✓ The Irrigation Efficiencies Program
- ✓ On-Farm
- ✓ Conveyance





WA State Conservation
Commission

Irrigation Efficiencies Program

- 85% Cost Share
- \$400,000/project
- IWM Planning
- Source Metering
- Trust Water Right

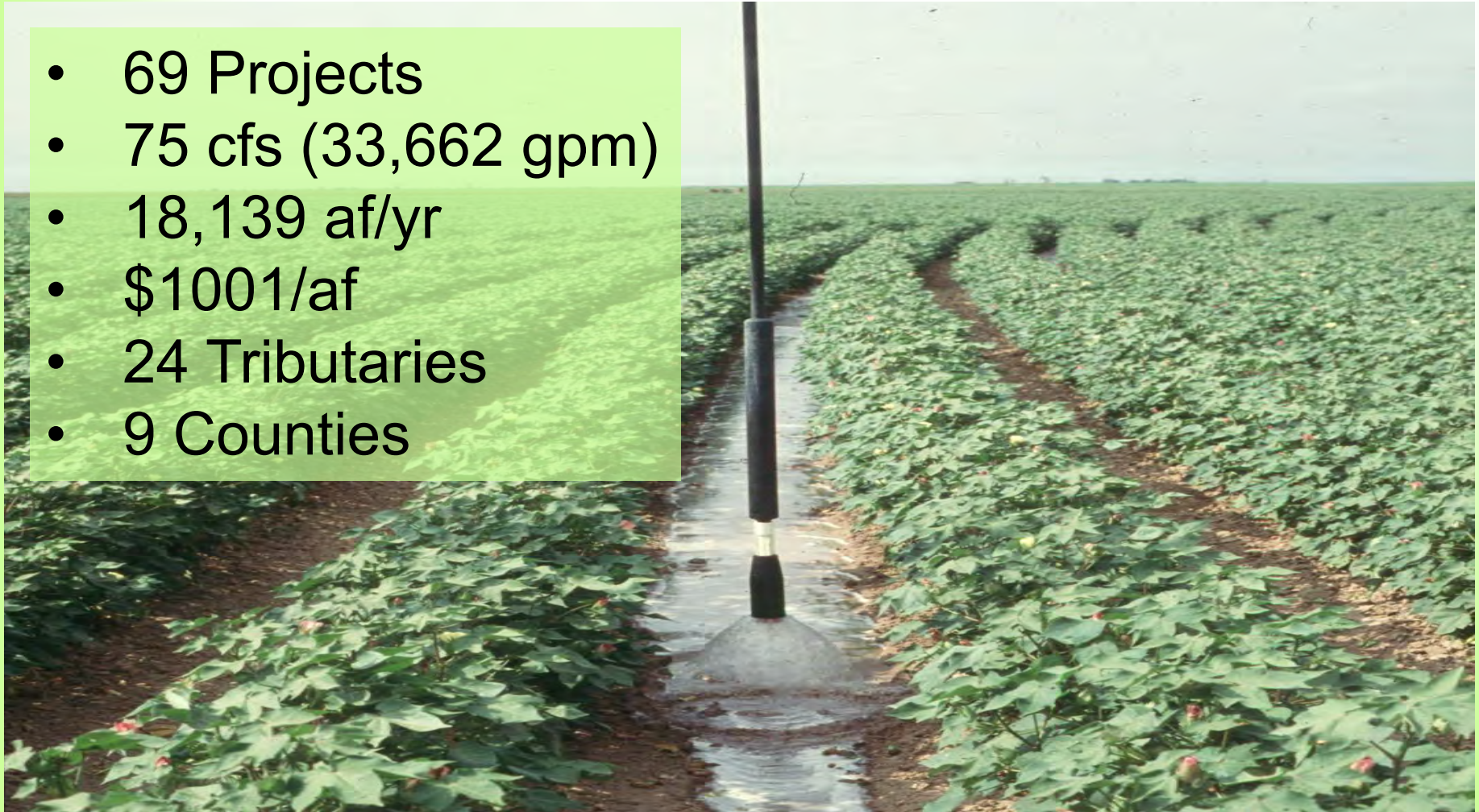




WA State Conservation
Commission

Irrigation Efficiencies Program Totals

- 69 Projects
- 75 cfs (33,662 gpm)
- 18,139 af/yr
- \$1001/af
- 24 Tributaries
- 9 Counties





WA State Conservation
Commission

Drought Mitigation and Response



- ❖ Planning around vulnerabilities
- ❖ Demand Reduction
- ❖ Soil Health
- ❖ Reverse Auctions
- ❖ Small Storage
- ❖ Technical Assistance Grants



WA State Conservation
Commission

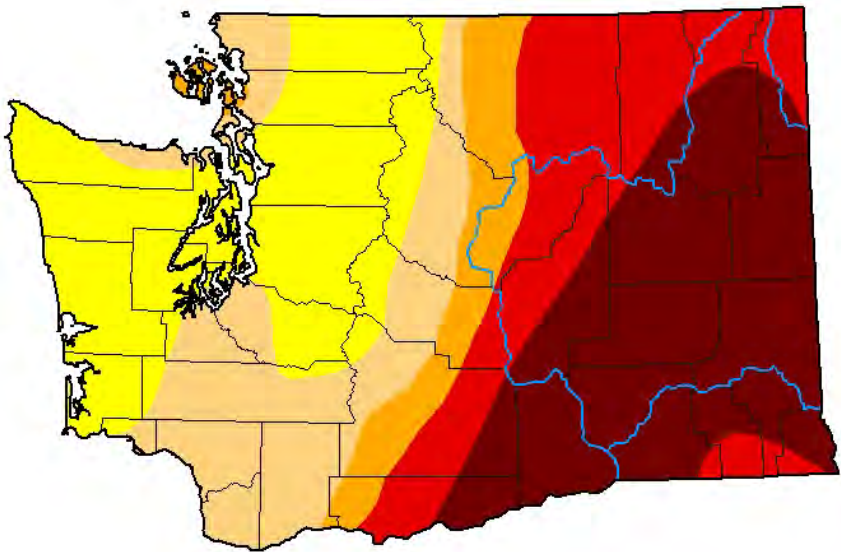
US Drought Monitor

U.S. Drought Monitor Washington

September 28, 2021

(Released Thursday, Sep. 30, 2021)

Valid 8 a.m. EDT



Intensity:

- None
- D0 Abnormally Dry
- D1 Moderate Drought
- D2 Severe Drought
- D3 Extreme Drought
- D4 Exceptional Drought

The Drought Monitor focuses on broad-scale conditions. Local conditions may vary. For more information on the Drought Monitor, go to <https://droughtmonitor.unl.edu/About.aspx>

Author:

Brian Fuchs
National Drought Mitigation Center



droughtmonitor.unl.edu



WA State Conservation
Commission

Water Rights Protection

- ❖ Education is important
 - " What is a water right?
 - " Tell me a story
- ❖ Trust Water Right Program
 - " Conservation
 - " Lease
 - " Purchase
 - " Donation





WA State Conservation
Commission

IWM / SIS

❖ **The right amount of water at the right time**

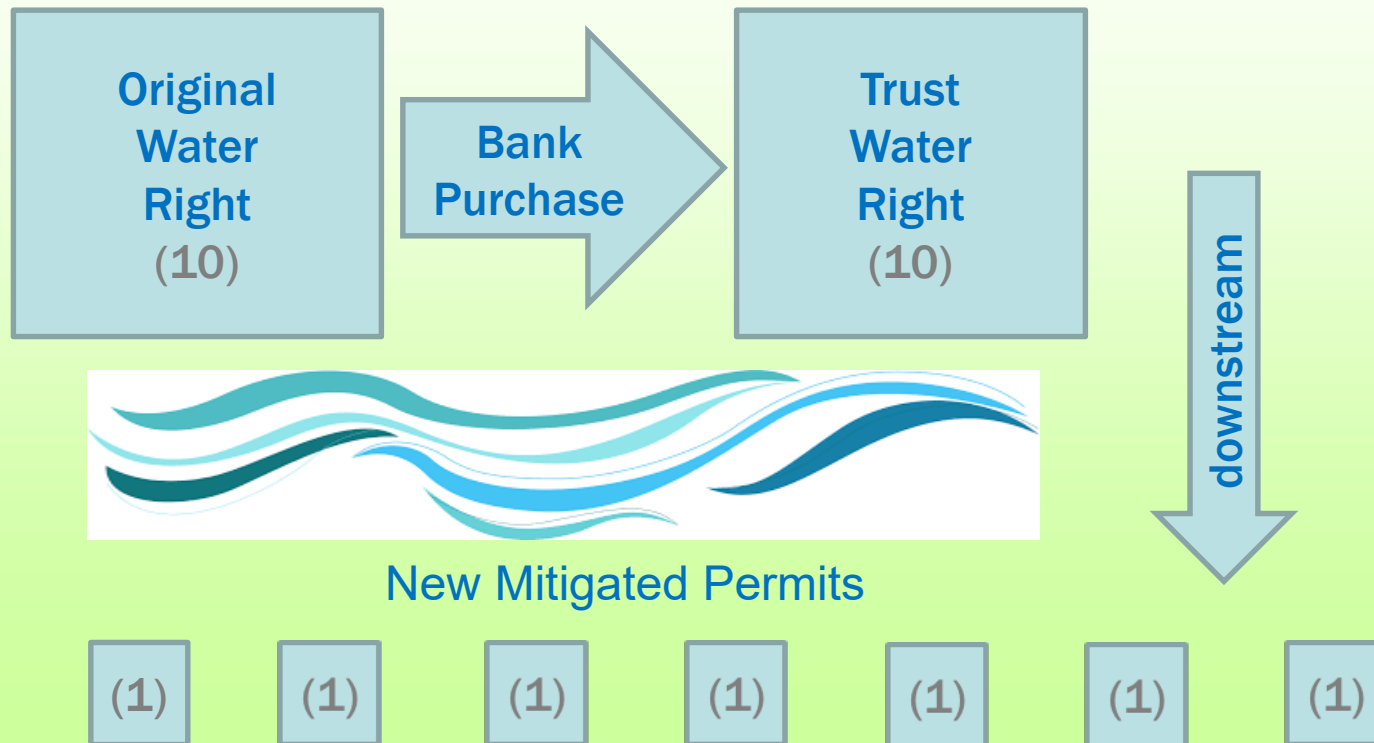




WA State Conservation
Commission

Water Banking Technical Assistance

- ❖ How it works in Washington
- ❖ How it might work for agriculture





WA State Conservation
Commission

Challenges Ahead





WA State Conservation
Commission

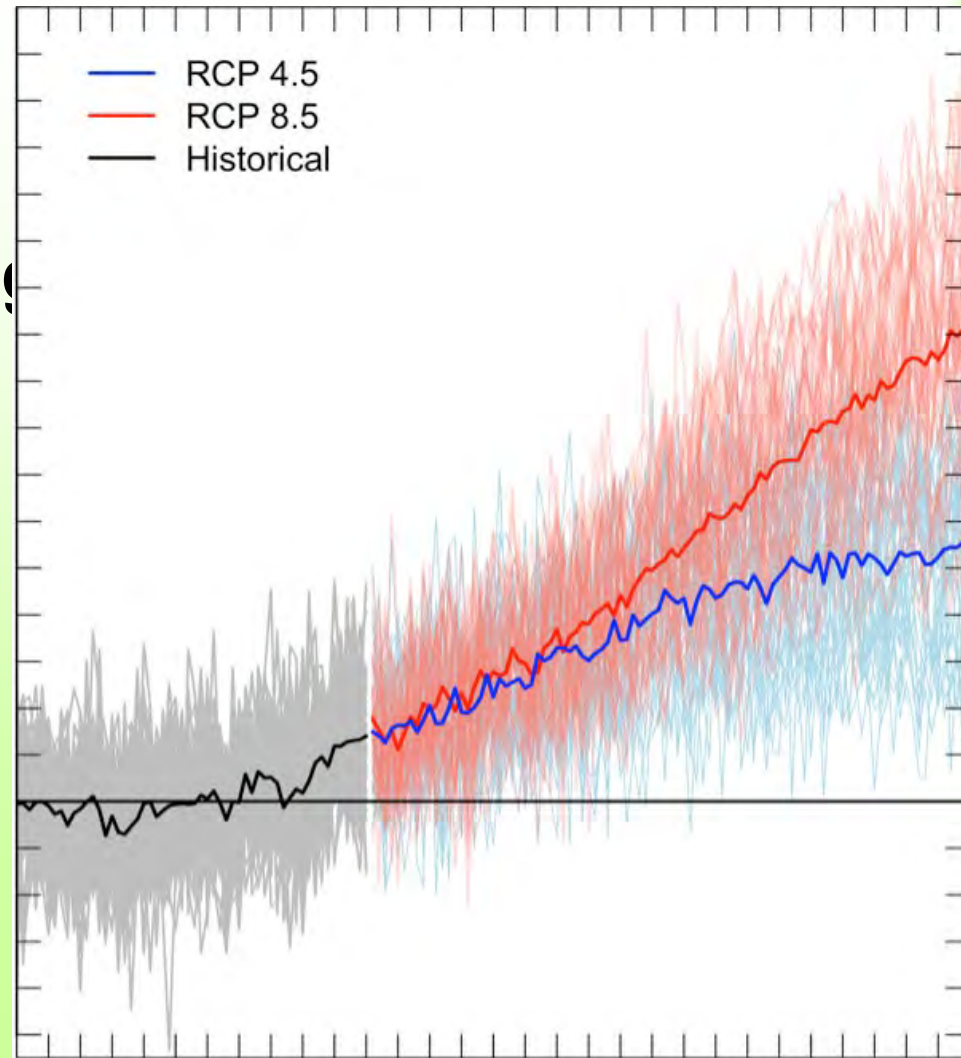
Climate Change

❖ Shifting Hydrograph

" Availability retiming

" Water Right Challenge

❖ Climate Migration

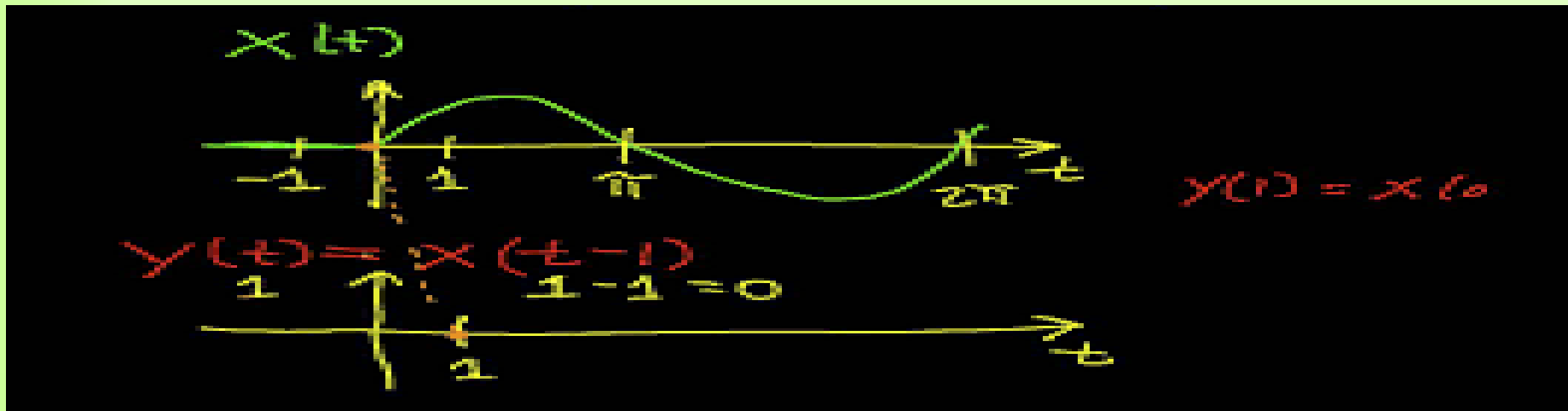




WA State Conservation
Commission

Agricultural Changes

- ❖ Earlier growing season-shifting hydrograph
 - " The water right challenge
 - " Double cropping?
- ❖ Market shifts
- ❖ Crop tolerance





WA State Conservation
Commission

Fish Needs

- ❖ Over Allocation of Water Rights
- ❖ Flow
- ❖ Temperature





WA State Conservation
Commission

Development Pressure

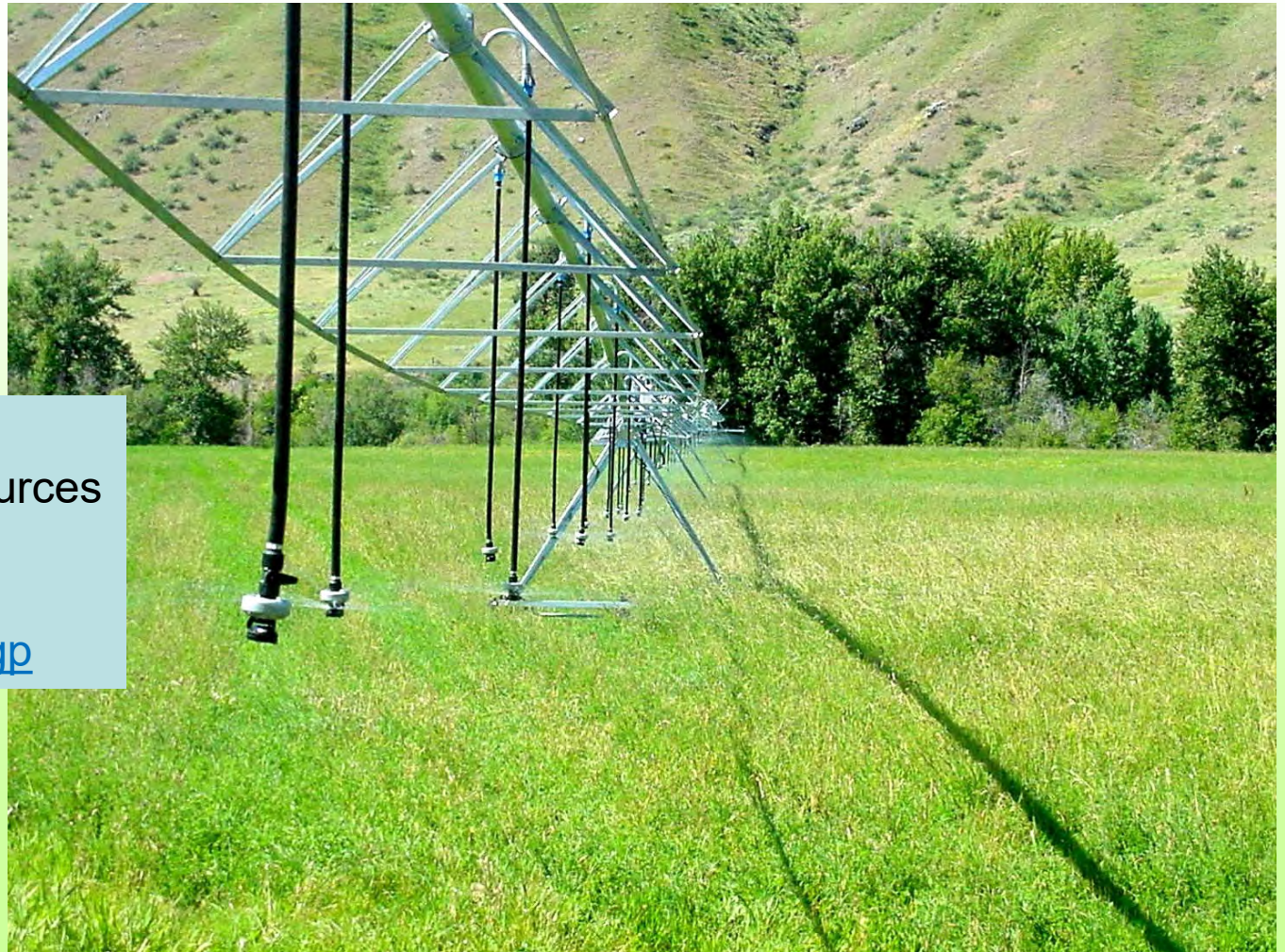
- ❖ Reduction in prime agricultural land
- ❖ Increased conflict in water timing and availability





WA State Conservation
Commission

Questions?



Jon K. Culp
WSSC Water Resources
509-385-7509
jculp@scc.wa.gov
www.scc.wa.gov/iegp