

Large Landscape Projects

By Thayne Mickelson
Utah Conservation Commission
Programs Administrator

What is the most common element between...

- Well managed livestock grazing
- Healthy watersheds
- Abundant/diverse wildlife populations

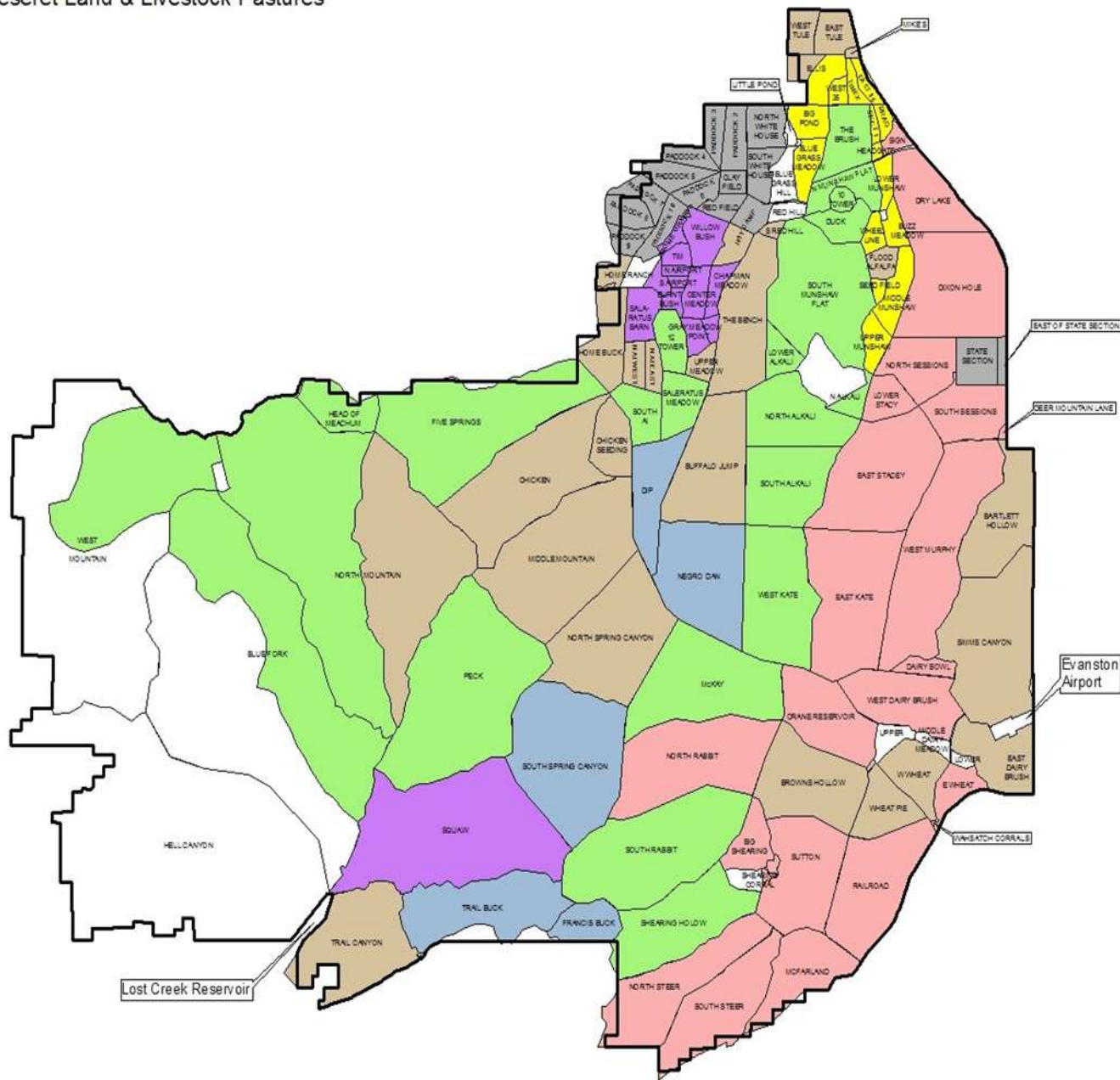
It's all about management!

Well managed livestock grazing is the most effective **landscape scale tool* to maintain and improve watershed health including wildlife habitat and forage production for livestock

25 Year Case Study

- Private Land Example of Management and its implications in Utah
- Deseret Land and Livestock in Northeast Utah
- Approximately 210,000 acres
- 15,000 acres of BLM
- 195,000 acres Private

Deseret Land & Livestock Pastures



Legend

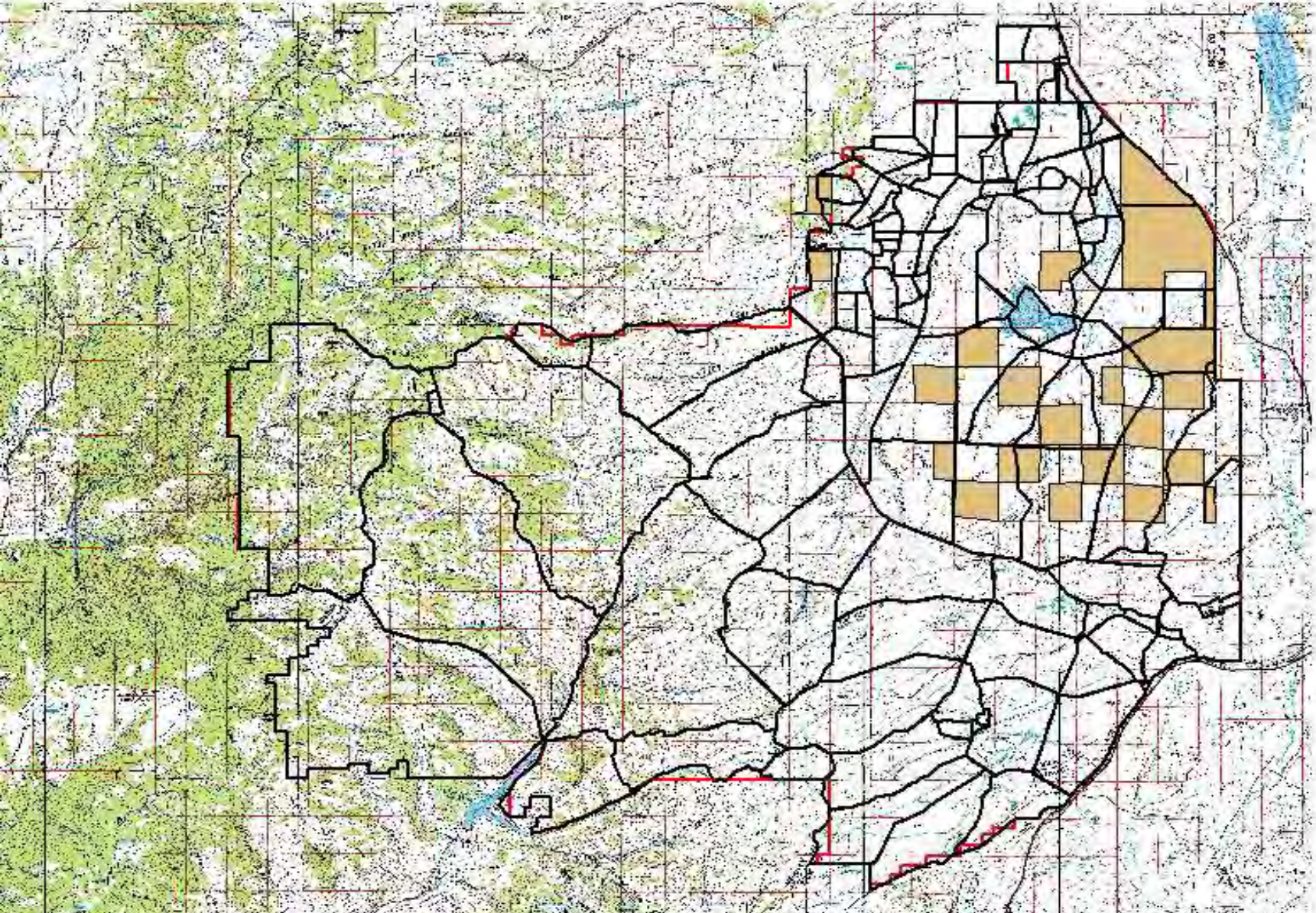
- Derrick's Herd - 3 to 5 year old cows (1,475 head)
- Mike's Herd - 6 to 8 year old cows (1,428 head)
- H2 - 2 year old cows (878 head)
- HR08 - Yearling replacement heifers (1,470 head)
- Stocker - Yearling steers (1,964 head)
- Old - 9 year old and older cows (657 head)
- Rested pastures
- None



1:152,273
1 in = 2 miles

90% of cattle on 10% of land area at one time during rapid growth season

Pastures with livestock (May 20)



Cattle Grazing Management

- Provide rest for recovery
- Reduce re-biting of individual plants
- Decrease selectivity, increase diet breadth
- Maintain or increase diversity of plant growth forms (grass, forb, shrub)
- Increase opportunities for seed production
- Increase herbaceous plant density, cover and production, improve water infiltration and riparian health
- Allow greater management flexibility (i.e. treat and rest pastures, varied season of use)
- Increase wildlife abundance and diversity



Grazing Allotment Proposal

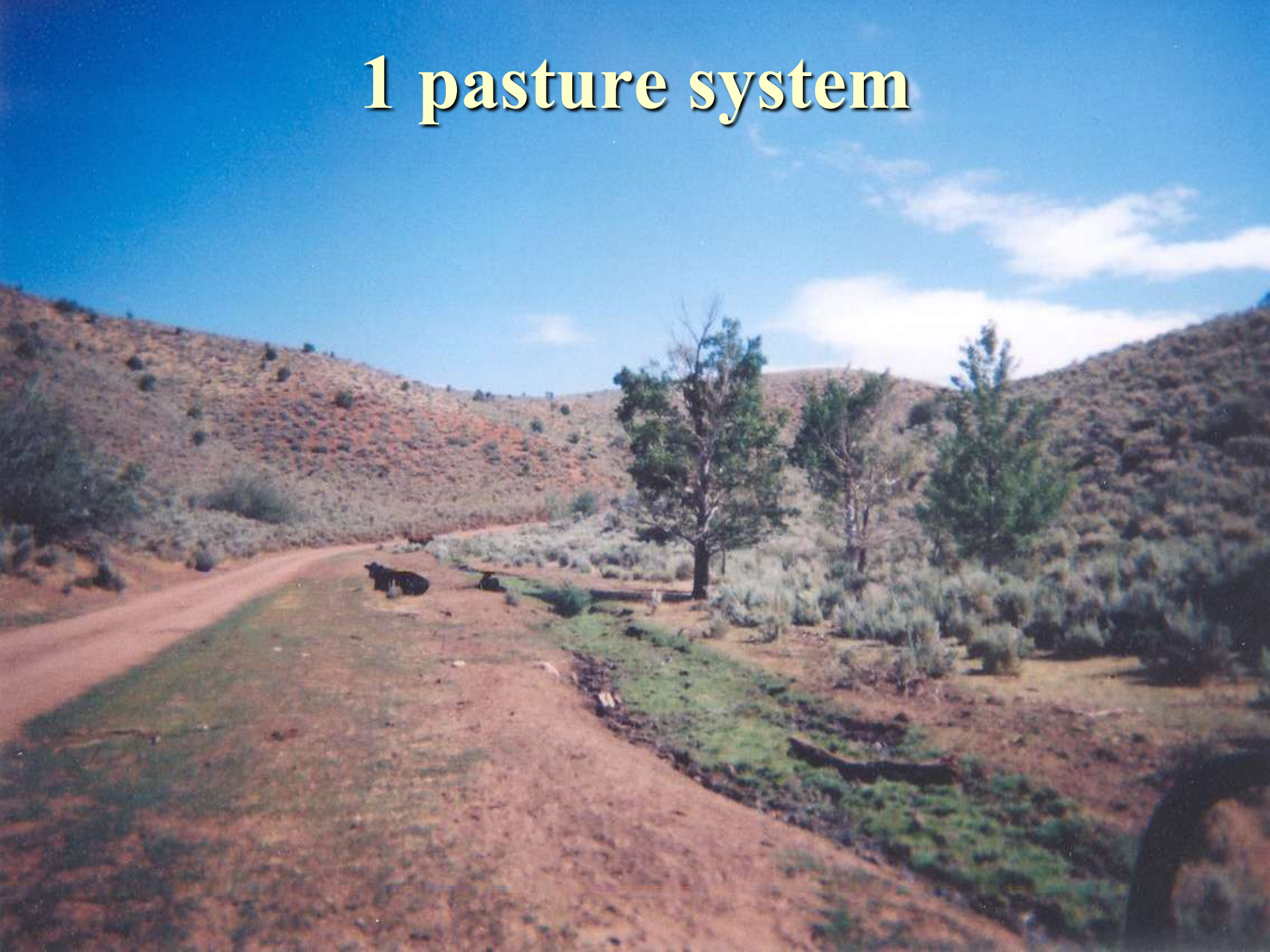
- 24 pastures created from 5 BLM allotments and 5 FS allotments
- Includes SITLA ground and Private Ground
- 29+ permittees and landowners
- Currently 3200 Cattle and 3000 sheep
- Would divide Cattle into 2 herds of 1600 each



Challenges Private verses Public Lands

- Management restraints (one decision maker versus many decision makers)
- Decision making process, National Environmental Policy Act (NEPA)
- Paying for implementation and maintenance
- Security for those involved

1 pasture system



3 pasture system



20 pasture system



5 years of rest from cattle grazing







Summary

- Increased stocking rates
- When sheep are included in the grazing plan sage grouse population increased
- Aggressive maintenance budget
- Ongoing local work group (CRM)
- Coordinated Resource Management Plan
- Up-to-date Resource Assessment
- County Commissioners and legislators involved
- Wildfire management

? Questions ?

