

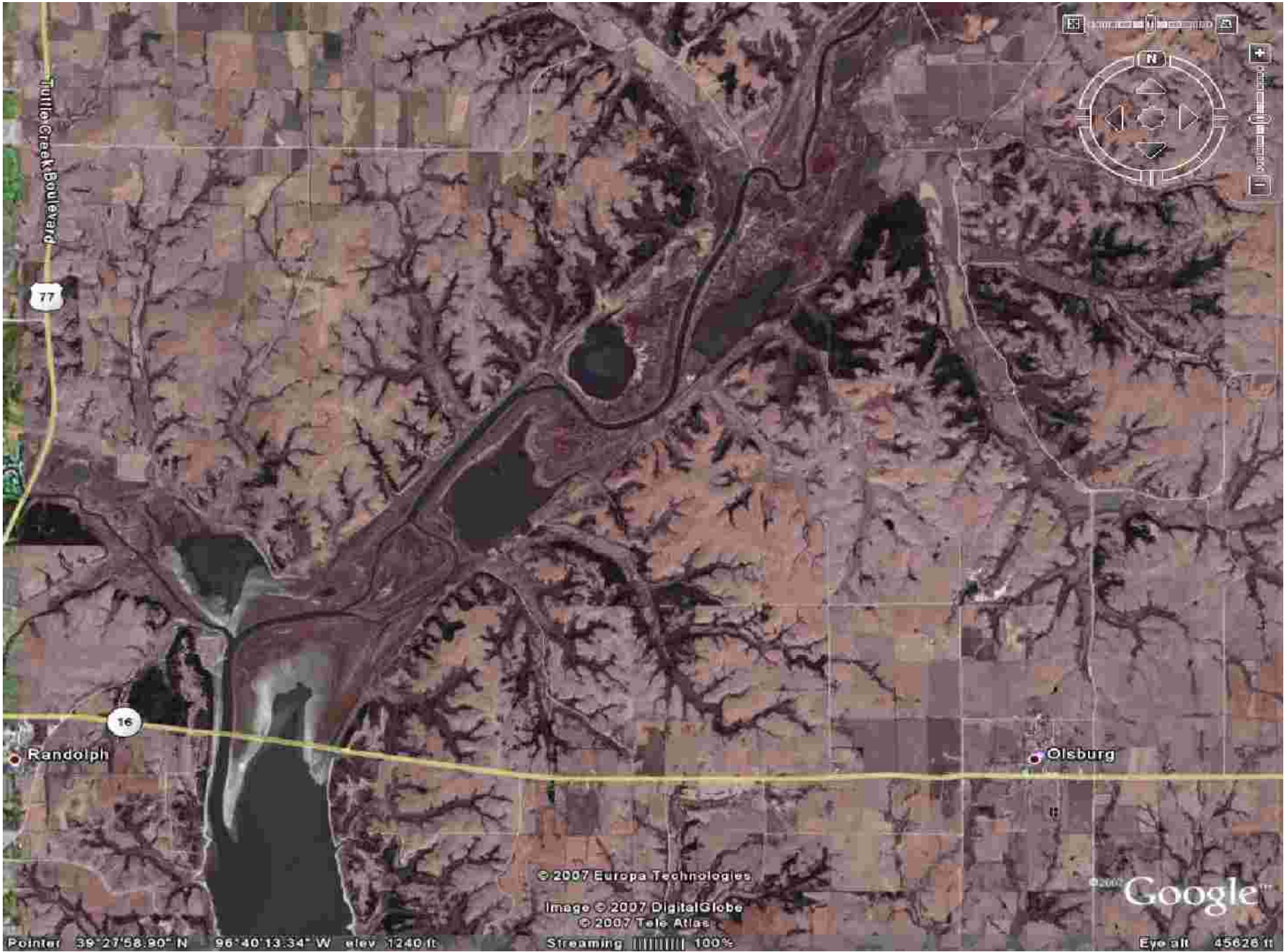
Kansas Reservoir Sustainability



Scott Carlson
Assistant Director
Kansas Conservation Commission

Kansas Reservoir Sustainability

- Issues:
 - Many Kansas reservoirs are filling with sediment faster than anticipated as there will be increased reliance on these reservoirs for public water supply.
 - Declining storage capacities reduce flood control, water supply recreational value, economic growth and increased water treatment costs.



Tuttle Creek Boulevard

77

16

Randolph

Olsburg

© 2007 Europa Technologies

Image © 2007 DigitalGlobe

© 2007 Tele Atlas

Google™

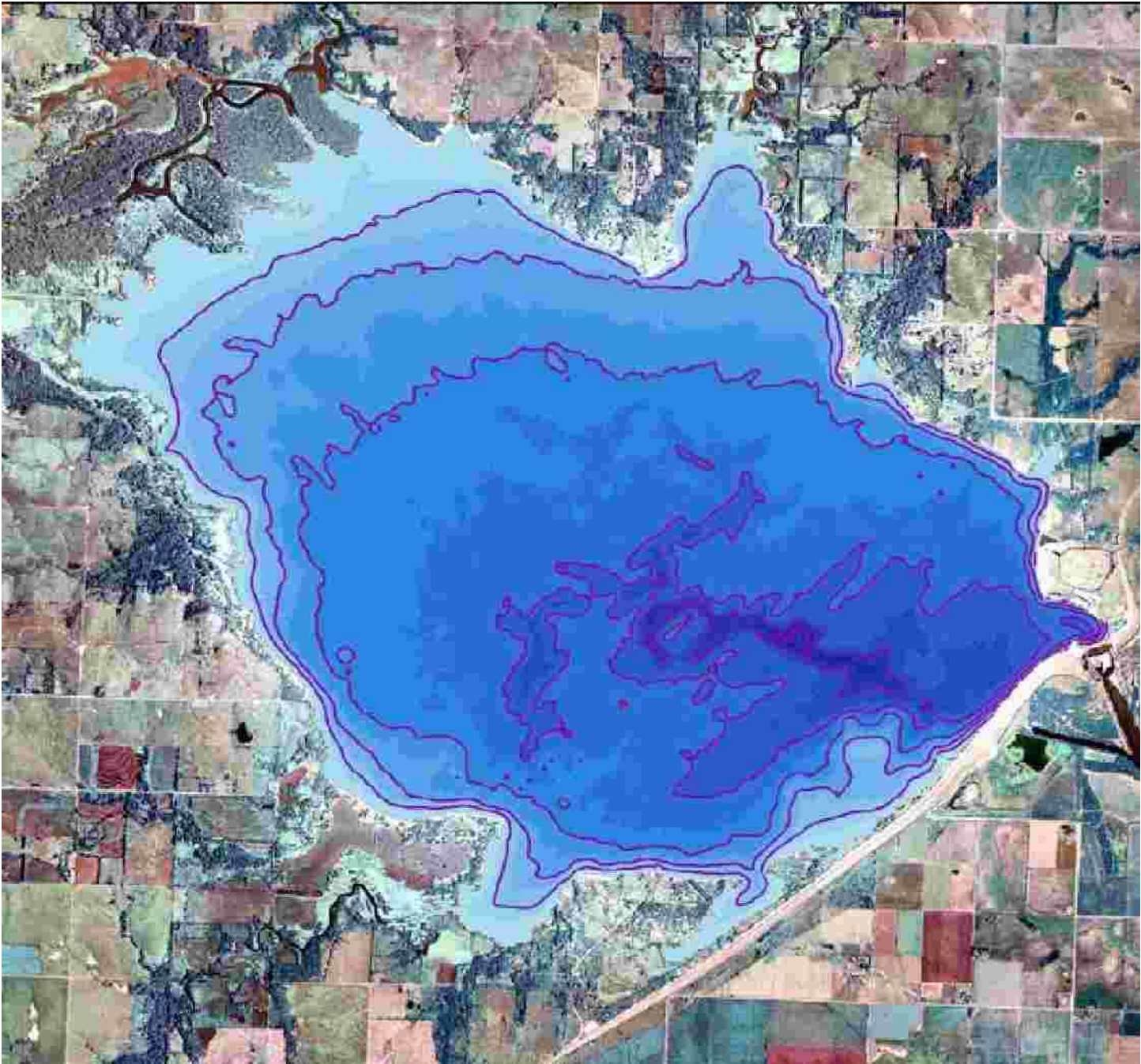
Pointer 39° 27' 58.90" N - 96° 40' 13.34" W elev. 1240 ft.

Streaming ||||| 100%

Eye alt 45626 ft

Kansas Reservoir Assessment

- Kansas Reservoir Sustainment Initiative
- Assess 24 federal reservoirs (22 provide water supply for more than half of the state population)
- Applied Science and Technology for Reservoir Assessment (ASTRA) – Kansas Biological Survey
 - Acoustic echosounding (Bathymetry)
 - Sediment coring



Solutions?

- Watershed Protection
 - Land Treatment and other BMP's
- Lake Renovation/Restoration
 - Dredging (restoring lost storage)
 - Structural
- Reservoir Replacement (limited)
- Streambank Stabilization and Protection

Research Needs

- Kansas Water Resources Institute:
 - Bathymetric mapping and coring
 - Identify sediment sources
 - Evaluation of erosion control BMP's
 - Develop targeting methods

Kansas Conservation Commission Assistance

- Soil erosion reduction practices cost share
- Targeted Streambank Stabilization cost-share
- Water Supply Restoration Program (Dredging)



For more information:

- Kansas Biological Survey – Applied Science and Technology for Reservoir Assessment (ASTRA)
www.kbs.ku.edu
- Kansas Water Office – Reservoir Sustainment Initiative
www.kwo.org

Kansas Conservation Commission
www.scc.ks.gov

Reservoir Sustainability: Questions for Other States

- Have you identified this as a problem in your state?
- What steps are you taking to address the issue?
- What are your conservation agencies doing to assist?