

Conservation and Resource Protection Grant Program

Question 1



Whipple Cactus. Photo by Gerald Brown



Today's Presentation

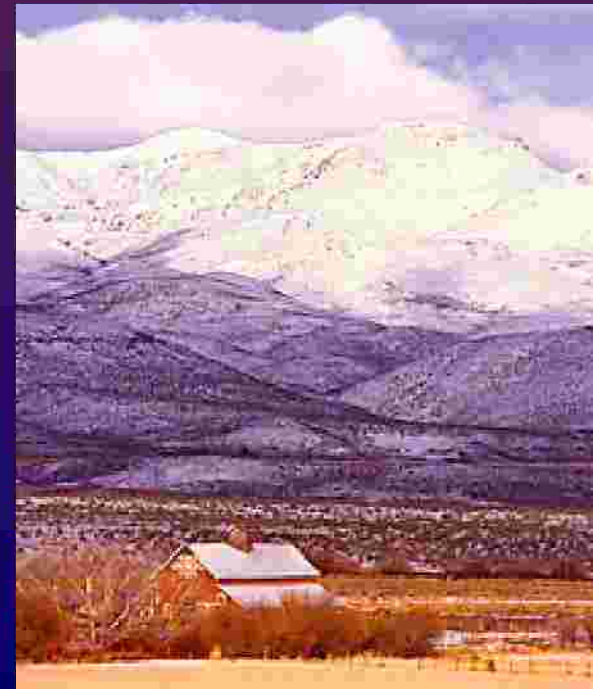
✓ **Brief Background of Q-1**

- ✓ Who is eligible to apply?
- ✓ What projects are eligible?
- ✓ Match contributions

✓ **Current Status of Q-1 Program**

- ✓ Next Steps to implementing Q-1 program

✓ **Questions**



Background

- ✓ Ballot Question 1 was a proposal to issue bonds in the amount of \$200 million for conservation and resource protection projects.
- ✓ It was passed by Nevada's voters in November 2002.



What is Question 1?

- ✓ Question 1 is a landmark environmental initiative designed to:
 - ✓ Protect open space, lakes, rivers, wetlands, and wildlife habitat
 - ✓ Restore and improve parks, recreational areas, and historic and cultural resources

Q1 Bond Allocation

- ✓ \$27 million to State Parks
- ✓ \$27.5 million to Division of Wildlife
- ✓ \$60 million for projects in Clark County
- ✓ \$10 million to Clark County
- ✓ \$10 million to Washoe County
- ✓ \$65.5 million to State Lands
- ✓ \$200 million

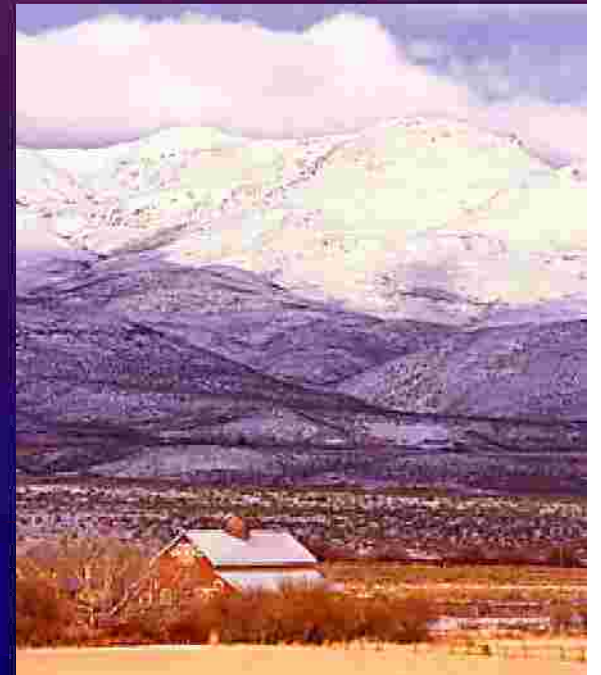
Division of State Lands

✓ \$65.5 million of the bond proceeds have been allocated to the Division of State Lands to administer a grant program.



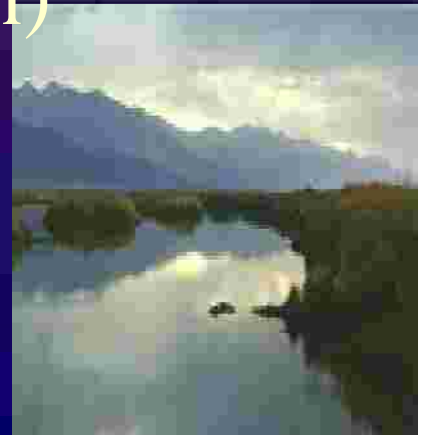
Who is eligible?

- ✓ Counties
- ✓ Municipalities
- ✓ Nonprofit organizations
- ✓ State agencies



What projects are eligible?

- ✓ Habitat conservation plans (\$3 million)
- ✓ Open space plans (\$250,000)
- ✓ Land and water acquisitions (\$35 million)
- ✓ Recreational trails (\$7.25 million)
- ✓ Urban parks and greenbelts (\$5 million)
- ✓ Carson River Corridor (\$10 million)
- ✓ Lake Tahoe Path System (\$5 million)



Match Requirements

Habitat conservation plans-5%

Open space plans-5%

Recreational trails-25%

Urban parks and greenbelts-25%

Land/Water Acquisitions (>100,000 pop)-50%

Land/Water Acquisitions (<100,000 pop)-25%

Land/Water Acquisitions (non-profit org.)-50%

Habitat Conservation Plans

- ✓ \$3,000,000
- ✓ To counties with population less than 100,000, municipalities within those counties and state agencies
- ✓ Match requirement – 5%



Nevada's Sagebrush Desert in May




Open Space Plans

- ✓ \$250,000
- ✓ To counties with population less than 100,000, municipalities within those counties and state agencies
- ✓ For development and adoption of open space plans
- ✓ Match requirement – 5%

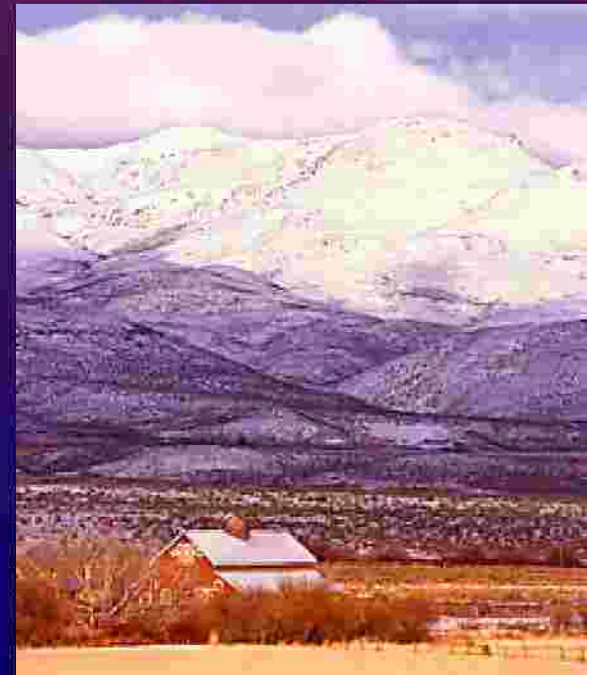


Land and Water Acquisitions

- ✓ \$20,000,000
 - ✓ To counties and municipalities
 - ✓ For acquisition of land and water or interests in land and water pursuant to an adopted open space plan
- 

To Protect and Enhance

- ✓ wildlife habitat
- ✓ sensitive or unique vegetation
- ✓ historic or cultural resources
- ✓ riparian corridors
- ✓ floodplains and wetlands



Match Contributions

- ✓ For land acquisitions by counties of more than 100,000 population, match is 50%
- ✓ For land acquisitions by counties of less than 100,000 population, match is 25%



Nevada's Sagebrush Desert in May

Land and Water Acquisitions

- ✓ \$15,000,000
- ✓ For agreements under which nonprofit conservation organizations may acquire land and water or interests in land and water for the public benefit
- ✓ Match requirement – 50%



To Protect and Enhance

- ✓ wildlife habitat
- ✓ sensitive or unique vegetation
- ✓ historic or cultural resources
- ✓ riparian corridors
- ✓ floodplains and wetlands
- ✓ other environmental resources



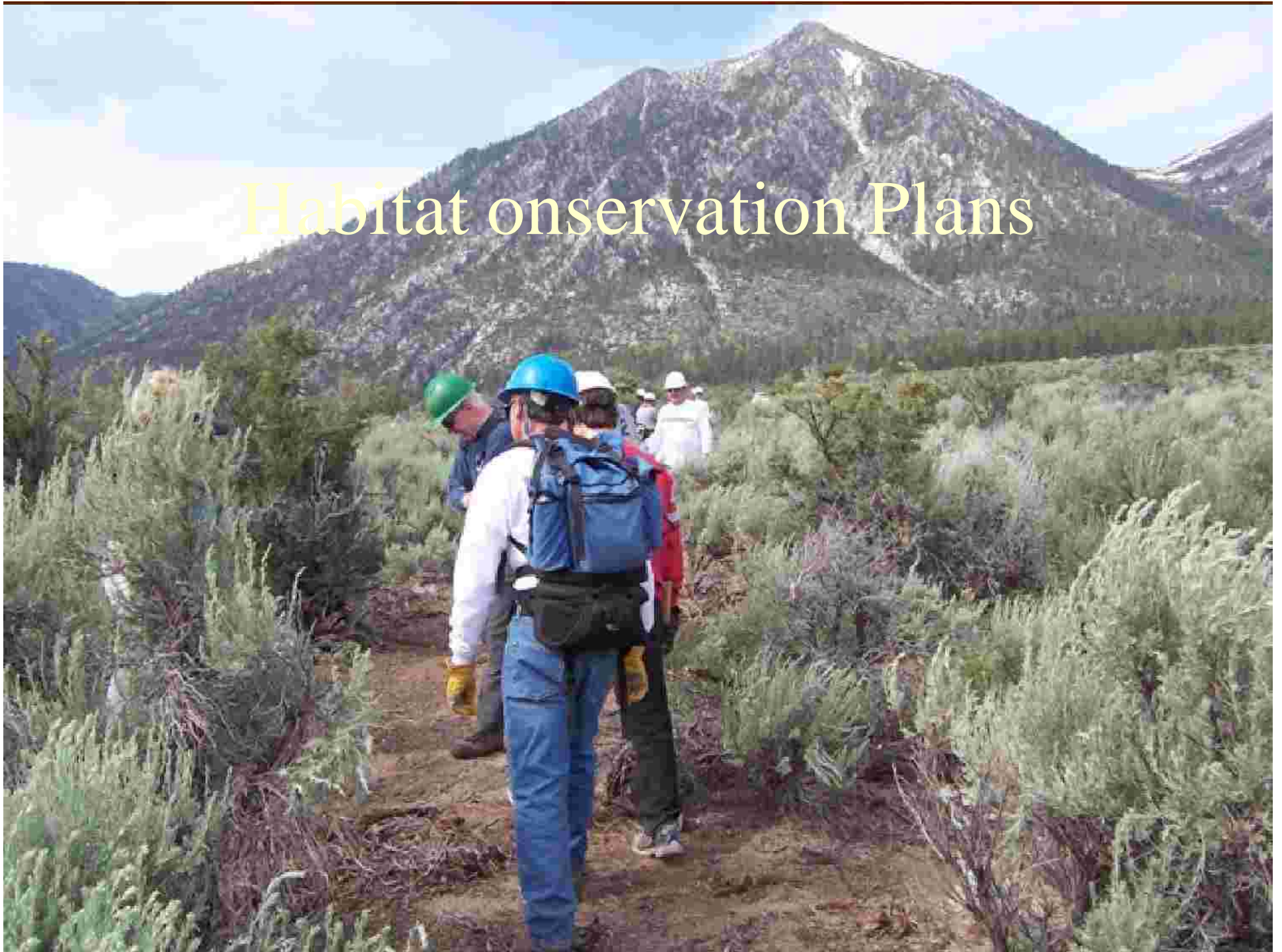
Recreational Trails

- ✓ \$7,250,000
- ✓ To counties, municipalities, private nonprofit organizations and state agencies
- ✓ For recreational trails including hiking, equestrian and bicycle trails
- ✓ Match requirement – 25%



Whipple Yucca Photo by Carol Bruce

Habitat observation Plans



Urban Parks and Greenbelts

- ✓ \$5,000,000
- ✓ To counties, municipalities, private nonprofit organizations and state agencies
- ✓ For acquisition of land and water or interests in land and water for urban parks and greenbelts
- ✓ Match requirement – 25%



Carson River Corridor

- ✓ \$10,000,000
- ✓ To Carson City, Churchill, Douglas, and Lyon Counties and municipalities within those counties
- ✓ For enhancement and restoration of the Carson River Corridor
- ✓ Match requirement – 50%



Participating Districts

- ✓ Carson Valley CD, Dayton Valley CD, Lander County CD, Churchill County CD and Elko County CD
- ✓ Projects include stream restoration, watershed assessments, development of habitat conservation plans and monitoring of conservation easements
- ✓ Funding granted to these projects total \$2,994,209



Lake Tahoe Path System

- ✓ \$5,000,000
- ✓ To Carson City, Douglas or Washoe Counties and municipalities within those counties
- ✓ For enhancement and development of the Lake Tahoe Path System



Funding Mechanism

- ✓ General Obligation Bonds are issued by the Treasurer's office as needed
- ✓ Bonds are re-paid through property tax levy
- ✓ Administration of the program is funded from the interest on the sale of bonds



Summary

- ✓ Awarded over \$50 million to 120 projects
- ✓ Funding for 14 of the 17 Nevada Counties
- ✓ Three advisory groups help State Lands rank applications for funding
- ✓ Preparations are beginning for a possible successor to Q1 (“Q2”)

