



NASCA Annual Meeting  
2007

# Kansas Stream Bank Stabilization Projects



# Streambank Stabilization

---

- i Streambank stabilization is a treatment(s) used to stabilize and protect streambanks. The practice stabilizes the eroding streambanks, reduces damage from sediment and runoff to downstream areas, and improves wildlife habitat.
- i It is used on highly erodible or critically eroding streambanks. These areas usually cannot be stabilized by ordinary conservation treatment and management, and if left untreated can cause severe erosion or sediment damage.



# Streambank Stabilization Components

---

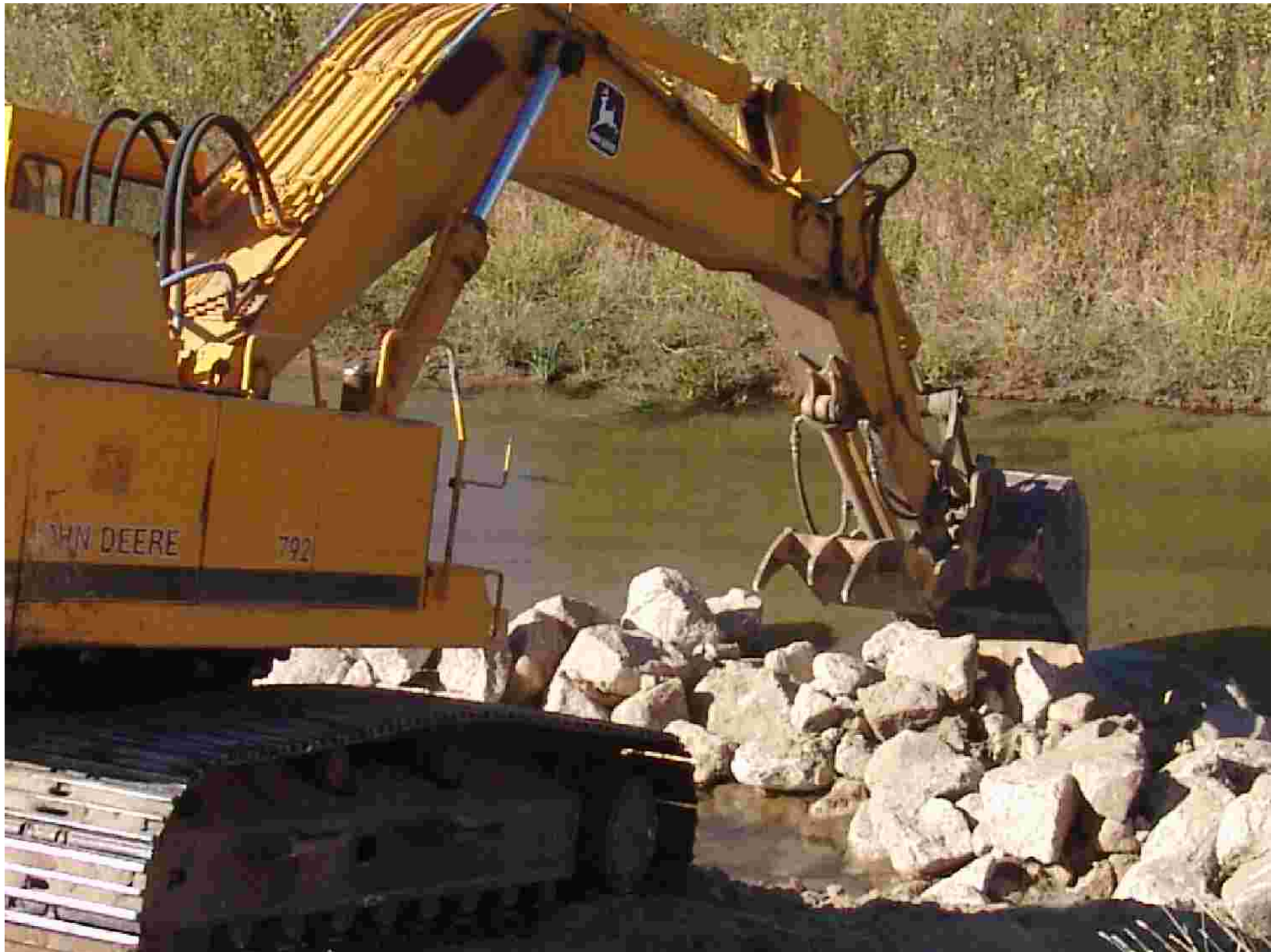
- i Earthmoving
- i Rock -12" to 36" aggregate
- i Bare root trees
- i Live stakes
- i Temporary seeding
- i Native grass seeding
- i Mulching
- i Geo Textile fabric

NRCS Code 580























# Funding Projects

---

- | Project Costs + \$50-100K
- | Funding Sources:
  - | Kansas Water Plan
  - | EQIP
    - | 50/50 program
    - | EQIP= 50%
    - | KWP= 40%
    - | Landowner = 10%
- | 2007: 14 Stream Restoration Projects  
(\$1,200,000 Project Cost)



# Project Implementation

---

- i Project Targeting: above public water supply reservoirs
- i 2006, 2007, 2008 = 55,000 feet of Streambank Stabilization
- i Began building to NRCS 580 Spec in 2006
- i Survey, Design and Construction = 1 year
- i Permitting: DWR, KDHE, COE (404)
- i TSP = The Watershed Institute  
<http://www.t-w-i.net/>



# Kansas River and Stream Corridor Management Guide Content

---

[scc.ks.gov](http://scc.ks.gov)

i Introduction

i Watersheds

i Dimension, Pattern and  
Profile

i Channel Evolution Models

i Urban Stream Corridors

i Rural Stream Corridors

i H e a l t h y Corridor  
Components

i Riparian Types

i Floodplain

i Wetlands

i Unhealthy Corridor  
Components

i Channelization

i Riparian Management

i Proper Functioning  
Condition

i Management Categories

i Riparian Grazing

i Livestock Water Supplies

i Riparian Forest Management

i Restoration vs. Stabilization

i Riparian Restoration

i Stabilization

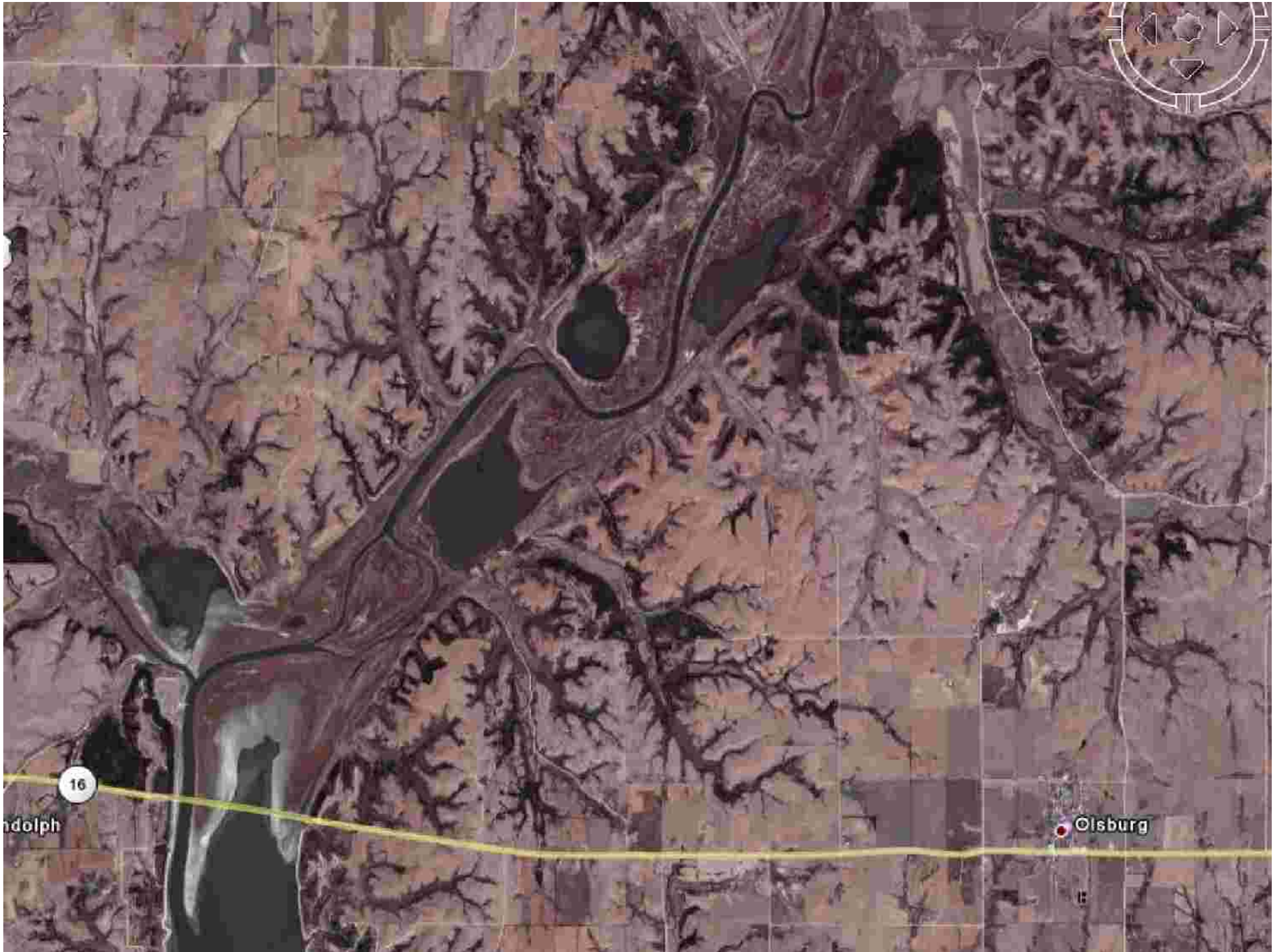
i Soil Bioengineering

i Bendway Weirs

i Rock Vanes

i Permits

i Assistance







# How are other states reducing sedimentation in reservoirs?

---

Scott Carlson

Kansas Conservation Commission

[scott.carlson@scc.ks.gov](mailto:scott.carlson@scc.ks.gov)

